



2016 LUXURY MOTOR COACH



WHEN YOU KNOW THE DIFFERENCE SM

LUXURY THAT SPEAKS VOLUMES

Understated elegance is what defines the 2016 Essex. A motor coach that is bold yet sophisticated. Powerful yet refined. Lavish yet tasteful. Exuding a quiet confidence, Essex establishes an undeniable presence that speaks for itself. It's a coach for those who recognize that superior quality is not a claim to be made, but an achievement that is earned.

Because luxury is more than a word, it's a destination.



ESSEX

THE DREAM HOME YOU CAN DRIVE

Freightliner® Tag Axle SL chassis with 600 HP Cummins® ISX diesel engine

11-speaker, 360-watt custom-tuned JBL® premium cockpit audio system

Comfort Drive™ Steering System with Passive Steer Technology

All-new Cathedral Ceiling featured on all bath-and-a-half models



WHEN YOU KNOW THE DIFFERENCE SM



Raven Décor Style With Pearl Glazed Maple Cabinetry - Floor Plan 4565

ATMOSPHERIC EXCELLENCE

While engineered for the road, Essex presents a living space that is nothing short of first class. Floor Plan 4565 includes an 84" Villa® Hide-a-Bed sofa with footrests, designed to help you enjoy the 48" Sony® LED TV with Bluetooth®-compatible Bose CineMate® home theater system.

High-Gloss Plank Tile Flooring



Ultra Leather Recliner with Fireplace



Solid-Surface Dinette with Residential Refrigerator



LUXURY ON DISPLAY. CONVENIENCE ON DEMAND.

If you're craving something special, the 2016 Essex serves up an available L-shaped kitchen complete with a Whirlpool® residential refrigerator and Kenyon® glass cooktop. Full LED lighting highlights the high-polish solid-surface countertop, while a residential stainless steel sink is highlighted by a Delta Touch20® faucet.

Available for the first time, More Floor brings high-gloss full tile flooring to the flat-floor slide-outs in the kitchen, living area and master bedroom. Combine that with the most cabinet storage ever offered in an Essex, and you have an expansive space with room for everyone and everything.

Beaded Glass Mosaic Backsplash



L-Shaped Kitchen Featuring Pearl Glazed Maple Cabinetry - Floor Plan 4565



King Bed with Accent Pillows, Custom-Quilted Bedspread and Scarf

Hardwood Cabinets Featuring New Premium Hardware



Dresser Featuring BrandMotion® Wireless Charging Station

ULTIMATE ACCOMMODATIONS

The 2016 Essex pairs meticulous workmanship with class-leading innovation in a way that makes the competition feel like a compromise. A King-size Sleep Number® adjustable bed lets you tailor your mattress settings with ease, while a handheld Sony® tablet puts you in control of climate settings, interior lighting, window shades and more.

As beautiful as the Pearl Glazed Maple cabinetry appears alongside an elegant Raven décor, the real show begins when you power on the 40" Sony® LED TV with Blu-ray/DVD player. Connected to a Bose Solo® 15, a speaker surround sound system with Bluetooth® compatibility, Essex delivers a theater-quality experience on command.

SONY®

Fresca® Multi-Spray Shower Panel



Mid-Cabin Half-Bath

INDULGE YOUR SENSES

Uncompromising in every way, the 2016 Essex has the amenities to turn every journey into pampering escape. Step inside the vast 40”x 32” full-tile shower and let its multiple body sprays ease away the day. Once you’re feeling fully refreshed, prepare for your next outing using the high-polish solid-surface vanity complete with full-width mirror.

Steps away, you’ll find a generously appointed mid-cabin half-bath. There’s even an exterior convenience station that provides hot and cold water and features a soap and towel dispenser. Speaking of clean, a premium Whirlpool® stacked washer & dryer can be found in the full-length rear wardrobe.



High-Polish Solid-Surface Vanity with Tile Backsplash



Full Tile Shower with Optional Fold-Down Seat



Girard Nova® Awnings Featuring Full LED Lighting



TRAVEL WELL

The 2016 Essex features a standard Freightliner® SL tag axle chassis or an optional Spartan® K3 tag axle chassis. Both are solidified by Newmar's all-new STAR Foundation, a groundbreaking steel superstructure added to enhance durability. Equipped with an air leveling system and Newmar's Comfort Drive™ Steering System with Passive Steer technology, Essex is engineered to deliver superior comfort and control for years to come.

With Essex, extras are everywhere you look, beginning with two Girard® Nova side awnings with motion sensor, remote control and LED lighting. There's even a pull-out Dometic® freezer located in the exterior baggage compartment.



EXTERIOR DÉCOR



RAVEN EXTERIOR



PROVENCE EXTERIOR

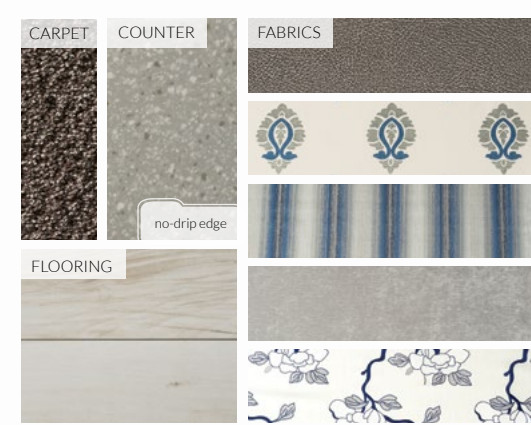


CHATEAUX EXTERIOR

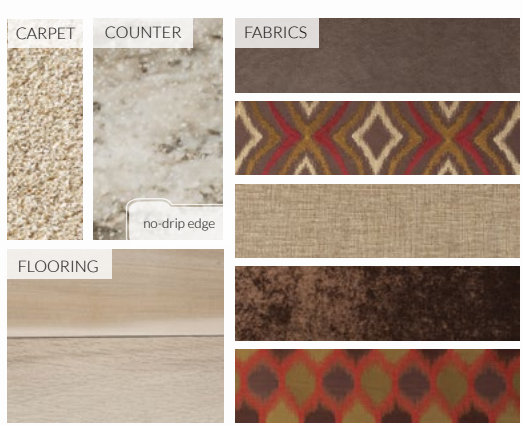


HEATHER EXTERIOR

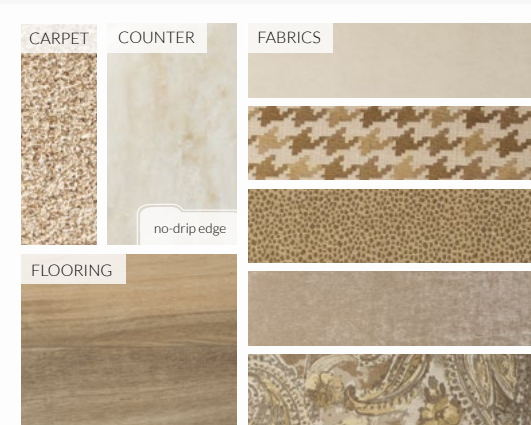
INTERIOR DÉCOR



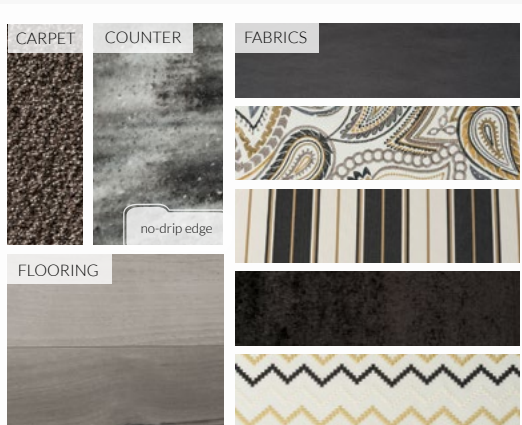
WINDSOR INTERIOR



MILANO INTERIOR



UMBER INTERIOR



RAVEN INTERIOR

WOOD OPTIONS



PEARL GLAZED
MAPLE



CARMEL GLAZED
CHERRY HIGH GLOSS

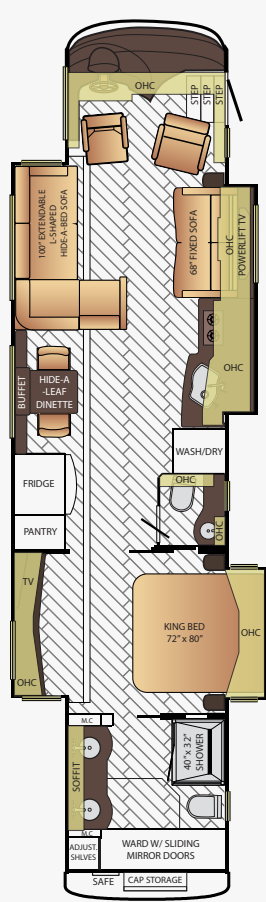


GINGER GLAZED
CHERRY HIGH GLOSS



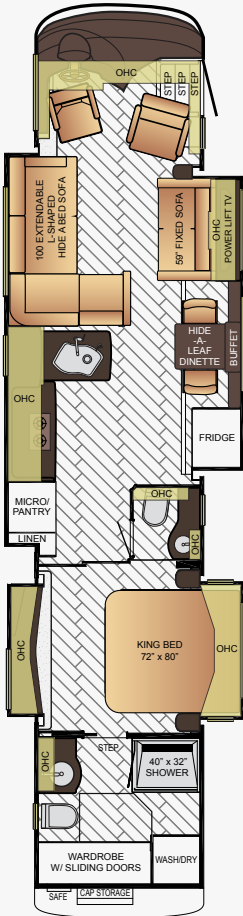
SABLE MAPLE

FLOOR PLANS



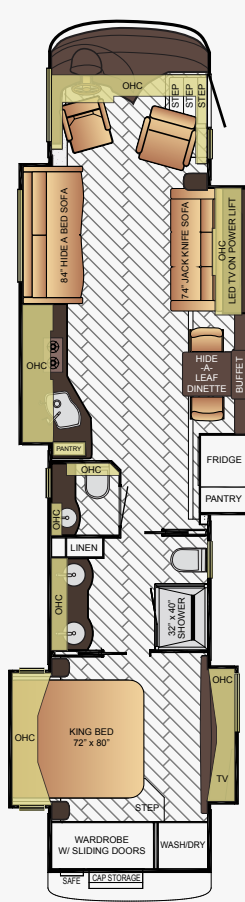
4503

App. Overall Length	44'11"
Width	101.5"
App. Overall Height	13'04"
Interior Width	95.5"
Interior Height	84"
Grey Tank	80 gal.
Sewage Tank	60 gal.
Water Tank	105 gal.
Propane Tank	22 gal.
Furnace	50,000 btu



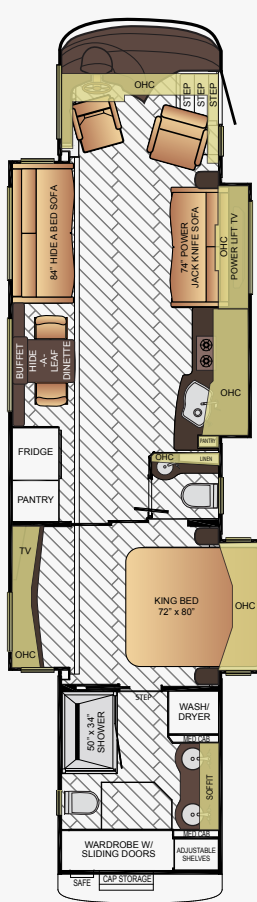
4507

App. Overall Length	44'11"
Width	101.5"
App. Overall Height	13'04"
Interior Width	95.5"
Interior Height	84"
Grey Tank	80 gal.
Sewage Tank	60 gal.
Water Tank	105 gal.
Propane Tank	22 gal.
Furnace	50,000 btu



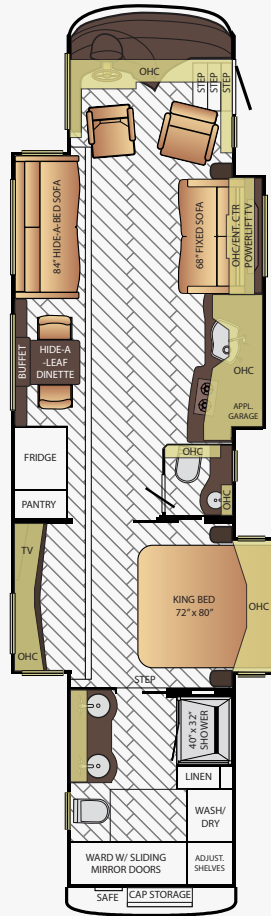
4518

App. Overall Length	44'11"
Width	101.5"
App. Overall Height	13'04"
Interior Width	95.5"
Interior Height	84"
Grey Tank	80 gal.
Sewage Tank	60 gal.
Water Tank	105 gal.
Propane Tank	22 gal.
Furnace	50,000 btu



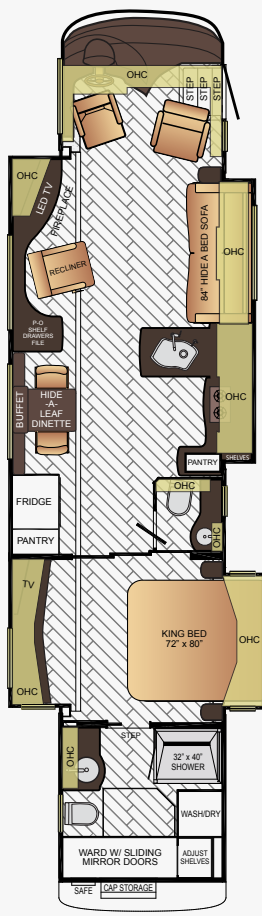
4519

App. Overall Length	44'11"
Width	101.5"
App. Overall Height	13'04"
Interior Width	95.5"
Interior Height	84"
Grey Tank	80 gal.
Sewage Tank	60 gal.
Water Tank	105 gal.
Propane Tank	22 gal.
Furnace	50,000 btu



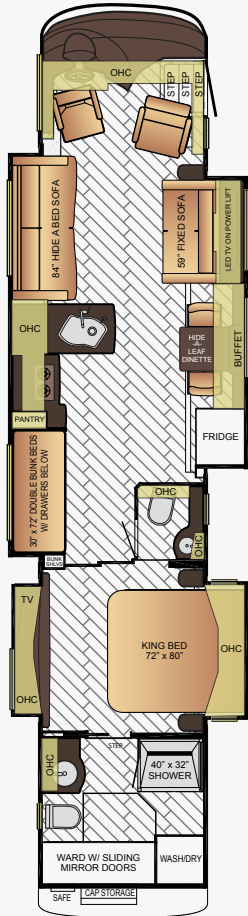
4553

App. Overall Length	44'11"
Width	101.5"
App. Overall Height	13'04"
Interior Width	95.5"
Interior Height	84"
Grey Tank	80 gal.
Sewage Tank	60 gal.
Water Tank	105 gal.
Propane Tank	22 gal.
Furnace	50,000 btu



4565

App. Overall Length	44'11"
Width	101.5"
App. Overall Height	13'04"
Interior Width	95.5"
Interior Height	84"
Grey Tank	80 gal.
Sewage Tank	60 gal.
Water Tank	105 gal.
Propane Tank	22 gal.
Furnace	50,000 btu



4598

App. Overall Length	44'11"
Width	101.5"
App. Overall Height	13'04"
Interior Width	95.5"
Interior Height	84"
Grey Tank	80 gal.
Sewage Tank	60 gal.
Water Tank	105 gal.
Propane Tank	22 gal.
Furnace	50,000 btu

FLOOR PLANS

CONSTRUCTION & CHASSIS SPECIFICATIONS

Equipped with a standard Freightliner® SL tag axle chassis, Essex also offers an optional Spartan® K3 tag axle chassis. Both feature an independent front suspension, HWH® hydraulic leveling system and support from Newmar’s all-new STAR Foundation. Essex is built using tubular truss web frames and substructure beams that form a foundation

stable enough to allow extensive pass-through storage. This allows Essex to expand beyond its chassis footprint, creating extra living space. Its Cummins® ISX diesel engine produces 600 HP, delivering incredible maneuverability and power, even on steep inclines.

Standard Specifications										Freightliner Specific		Spartan Specific	
Floor Plan	Engine HP	Axle Ratio	Fuel Cap.	Wheel Base	Front GAWR*	Rear GAWR*	Tag GAWR*	GVWR*	GCWR*	App. UVW	App. NCC	App. UVW	App. NCC
4503	600	4.3	150 gal.	292+TAG	20,000 lb.	20,000 lb.	14,000 lb.	54,000 lb.	69,000 lb.	46,700 lb.	7,300 lb.	45,800 lb.	8,200 lb.
4507	600	4.3	150 gal.	292+TAG	20,000 lb.	20,000 lb.	14,000 lb.	54,000 lb.	69,000 lb.	46,900 lb.	7,100 lb.	46,000 lb.	9,000 lb.
4518	600	4.3	150 gal.	292+TAG	20,000 lb.	20,000 lb.	14,000 lb.	54,000 lb.	69,000 lb.	46,400 lb.	7,600 lb.	45,600 lb.	8,400 lb.
4519	600	4.3	150 gal.	292+TAG	20,000 lb.	20,000 lb.	14,000 lb.	54,000 lb.	69,000 lb.	46,500 lb.	7,500 lb.	45,800 lb.	8,200 lb.
4553	600	4.3	150 gal.	292+TAG	20,000 lb.	20,000 lb.	14,000 lb.	54,000 lb.	69,000 lb.	47,100 lb.	6,900 lb.	46,200 lb.	7,800 lb.
4565	600	4.3	150 gal.	292+TAG	20,000 lb.	20,000 lb.	14,000 lb.	54,000 lb.	69,000 lb.	46,900 lb.	7,100 lb.	46,000 lb.	8,000 lb.
4598	600	4.3	150 gal.	292+TAG	20,000 lb.	20,000 lb.	14,000 lb.	54,000 lb.	69,000 lb.	46,900 lb.	7,100 lb.	46,000 lb.	9,000 lb.

Lengths, heights, widths and dry weights are approximate. Weight will vary based on optional equipment added to the above base weight.

GAWR: Gross Axle Weight Rating is the maximum permissible weight for an axle.

GVWR: Gross Vehicle Weight Rating is the maximum permissible weight for a fully loaded motor coach.

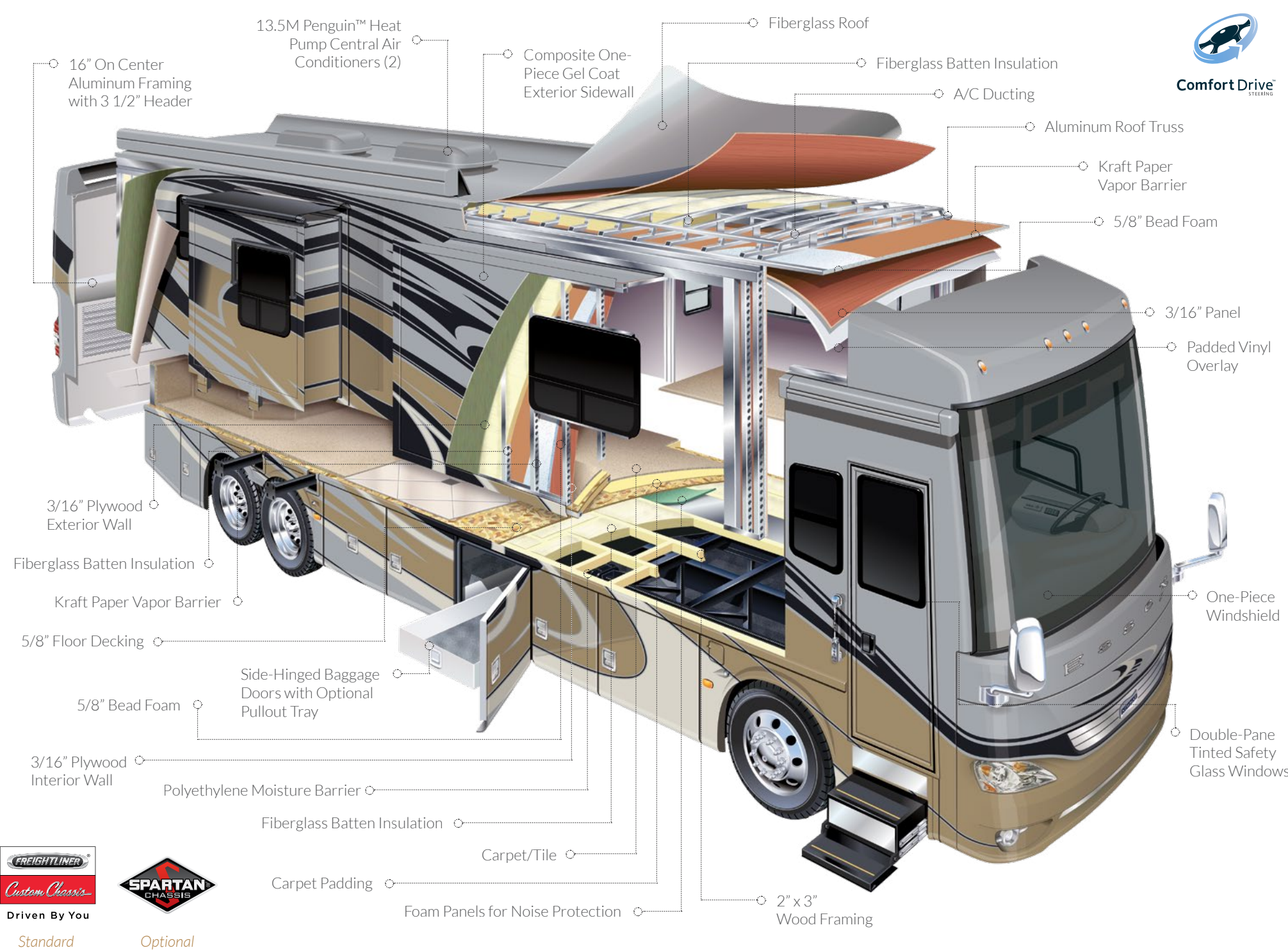
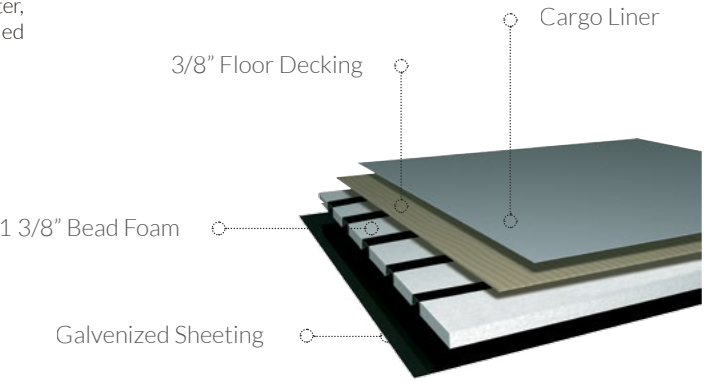
GCWR: Gross Combination Weight Rating is the value specified by the manufacturer of the vehicle as the maximum allowable loaded weight of this motor coach and any towed trailer or towed vehicle.

UVW: Unloaded Vehicle Weight is the weight of this motor coach as built at the factory with full fuel, engine oil and coolants. Does not include cargo, fresh water, propane gas or dealer-installed accessories.

NCC: Net Carrying Capacity is the maximum weight of all occupants, including the driver, personal belongings, food, fresh water, waste water, propane gas, tools, tongue weight of towed vehicle, dealer-installed accessories, etc., that can be carried by the motor coach.

**Specifications supplied by the chassis manufacturer.*

Essex R-Values:
Roof R-Value = 24
Sidewall R-Value = 11
Floor R-Value = 16
Basement R-Value = 4



FEATURES & OPTIONS



CHASSIS
FEATURES

Freightliner® Passive Steer Tag Axle SL Chassis with 600 HP ISX Cummins® Diesel Engine
Cruise Control
Comfort Drive™ Steering with Adjustable Controls
Power Tilt & Telescoping VIP Smart Steering Column & Mirrors
Recessed Fuel Fills with Crossover to Fill from Either Side
Back-Up Alarm
Anti-Lock Braking System
In-Dash Electronic Chassis Information Center
Air Leveling Control System
Alcoa Dura-Bright® Aluminum Wheels
Memory Settings for Driver's Seat Pedals, Steering Column & Mirrors
Tire Pressure Monitoring System
Trip Travel Information

OPTIONS
Spartan® Passive Steer Tag Axle K3 Chassis with 600 HP Cummins® ISX Diesel Engine
Vorad® Adaptive Cruise System



AIR CONDITIONING
AND HEATING

Three 15M Penguin™ Heat Pump Air Conditioners with Remote-Control Thermostat
Hydronic Zone Diesel Heating System with Continuous Hot Water
Propane Gas Leak Detector
Dash Heater and Air Conditioner
Air Conditioning Drainage System On Roof
Driver and Passenger Dash Overhead Ventilation System

OPTIONS
Electric Radiant Heat Installed Below Floor Tile



APPLIANCES

Convection Microwave with Recessed Two-Burner Gas Cooktop
Whirlpool® Stainless Steel 19.7 Cf. Refrigerator with Water Dispenser

Whirlpool® Two-Piece Stacked Washer & 220-Volt Dryer
Dometic® 3.77 Cf. Freezer on Pullout Tray in Exterior Baggage Compartment
Air Horns
Fireplace in Living Area*

OPTIONS
Dishwasher in a Drawer Located Below Cooktop
30" GE Profile Advantium® Microwave
All Electric, Flush-Mount Induction Cooktop, 2 Extra Batteries
All Electric, Flush-Mount Kenyon® Cooktop, 2 Extra Batteries
Central Vacuum with Tool Kit



AUDIO, VIDEO
AND ACCESSORIES

Sony® LED TV & Blu-ray/DVD Player in Living Area and Bedroom (Sizes Vary Per Floor Plan)
Sony® 48" LED TV with Televator in Living Area*
Bose® Cinemate Home Theater System
Bose® Solo 15-Speaker Sound System with Bluetooth in Bedroom
Dash Radio with Touch Screen Navigation, Dual Monitors, Harman/JBL® 360-Watt Sound System & Subwoofer
High Definition Wiring
Satellite Prep on Roof
TV Jack and 110-Volt Receptor in Door-Side Exterior Storage Compartment
Winegard® Digital Power TV Antenna
Sony® Tablet That Controls AV Equipment, Lights, Shades, Keyless Entry & Silverleaf App
Infra-Red Repeater System to Operate Audio/Video Components
Wireless Router
Sirius® Satellite Radio Capability with Antenna (Does Not Include Monthly Subscription)

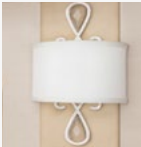
OPTIONS
Sony® 40" LED TV in Front Overhead
Exterior Entertainment Center in Sidewall with Sony® 40" LED TV and Soundbar
Exterior Entertainment Center in Storage Compartment with 40" Sony® LED TV and Sound Bar
Two 11" LCD Flip-Down Monitors and DVD Players with Headphones, One at Each Bunk*
Extra Monitor for Navigation on Passenger Side
Remote-Control Color Rearview Camera
Security System
Winegard® Rayzar Automatic Digital Antenna
Winegard® Automatic Satellite Dish
KVH In-Motion Dome-Shaped Satellite Dish



CABINETS
AND FURNITURE

Sable Maple Cabinetry with Unitized Construction and Full Overlay Doors
Concealed Hinges on Cabinet Doors
High-Polish Solid-Surface Countertop in Kitchen with Undermounted Stainless Steel Sink
High-Polish Solid-Surface Countertop in Bathroom and Bedroom
Drawers with Full Extension Guides
Villa® Ultra Leather Sofa and Front Seats with Integrated Seat Belts
Six-Way Power Adjustable Heated Driver/Passenger Seats with Power Lumbar Support and Power Footrest
Lifts on Bed Top
Pullout Pantry Shelves*
Passenger Seat Work Station
Sleep Number® Premier Radius Corner Air Mattress
Cedar Paneling in Bedroom Wardrobe

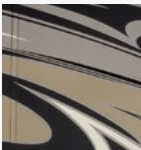
OPTIONS
Carmel Glazed Cherry Cabinets with High Gloss Finish
Ginger Glazed Cherry Cabinets with High Gloss Finish
Pearl Glazed Maple Cabinets
Corian® Double-Bowl Kitchen Sink
Overhead Cabinet Above Dinette
Overhead Cabinet Above Off-Door-Side Sofa
Overhead Cabinet in Dinette/Living Room Slide-out
Euro-Booth Dinette
Off-Door-Side Power Extenda L-Sofa
Extenda Flex Dinette
Combination Desk/Dinette with Buffet Table, 2 Fixed and 2 Folding Chairs
Door-Side Fold & Tumble Sofa with Air Mattress, Off-Door Side Extenda L-Sofa
Door-Side Fold & Tumble Sofa with Air Mattress, Off-Door Side Recliners with Lampstand
Door-Side Televator TV, Two Recliners with Lampstand On Off-Door Side Sofa/Euro-Booth Dinette Ensemble
Power Flip-Up Sofa in Bed Base
Power Incline Retracting Bed Base
Sofa/U-Dinette Ensemble
U-Dinette with Power Adjustable Table



ELECTRICAL
FEATURES

12.5 Kw Onan® Diesel Generator with Auto Changeover on Hydraulic Slide-out Tray
50-Amp Electrical Service with Flexible Cord and Automatic Transfer Switch
12-Volt Auxiliary Receptor on Dashboard
Six 6-Volt AGM House Batteries on Pullout Tray
5-Watt Solar Panel to Charge Chassis Battery
3000-Watt Inverter
Accent Lights in Feature Ceiling, Slide-out Fascia Trim, Lambrequins, Kitchen, Bed Base and Underneath Dash
Automatic Generator Start on Low Battery or Temperature Setting
Battery Disconnect Switch for House Battery
Emergency Engine Start Switch
Engine Block Heater
Exterior Security Lights
Manually Operated Hold-to-Run Slide-out Switch
High-Power USB Charger at Dinette & Bedroom Nightstand
Wireless Charging Mat on Dash and Bedroom Dresser Countertop
LED Lighting in Exterior Storage Compartments on Automatic Switches
LED Lighting Inside Pullout Pantry & Bathroom Lavatory Bases
Power Rewind Reel with 50' Cord
Secondary Multiplex Touch Screen in Bedroom
Silverleaf Multiplex Electrical Wiring System
Solar Prep Wire from Roof to House Battery Compartment
LED Docking Lights with Stainless Steel Trim
Exterior LED Accent Lights Above Rear Tow Guard and Below Door-Side Slide-outs

OPTIONS
Four Sunforce® Flexible 95-Watt Solar Panels on Roof
Roof-Mounted Spotlight



EXTERIOR
FEATURES

Full-Paint Masterpiece Finish™ with Cut & Buff and Nano Shield Protection on Front Cap
Assist Handle at Entrance Door
Convex Chrome Exterior Mirrors with Remote Control, Defrost, and Turn Signals
Chrome Power Baggage Door Locks, Keyless Entry Door with Touch Pad & Doorbell
Mud Flaps
Rear Protective Tow Guard

Stainless Steel Exterior Trim Pieces and Kick Panel at Entrance Door
Undercoating
Lit Exterior Storage Compartments with Cargo Liner
Dual-Latched Front Entrance Door with Power Flush Stepwell Cover
Automatic Step for Entrance Door
Rear Hitch for Towing Car
Holding Tank Levels Displayed in Exterior Water Works Compartment
Hydraulic Leveling Jacks

OPTIONS
Stainless Steel Trim Kit for Exterior Baggage Doors
Large Storage Tray with Access from One Side or Either Side
Large Storage Tray
Power Sliding Storage Tray



INTERIOR
FEATURES

Designer Feature Ceiling
Cathedral Ceiling with Added Height to Rear Bathroom Floor Plans*
Auto Motion Power Shades at Windshield, Driver & Passenger Side Windows
Auto Motion Power Window Shades and Lambrequins
Tile Floor in Kitchen, Bathroom, Bedroom and Living Areas
Interior Assist Handle at Main Entry Door
Quilted Bedspread, Bed Scarf and Accent Pillows
Hardwood Raised Panel Interior Passage Doors
Polished Solid-Surface Window Sills
Shoe Storage Shelves Recessed into Rear Cap Wardrobe
Safe Located in Bedroom Wardrobe
10 Bc Fire Extinguisher, Smoke Detector and Carbon Monoxide Detector

OPTIONS
Silhouette Power Window Shades
Carpet in Bedroom in Place of Tile



PLUMBING AND
BATH FEATURES

Demand Water System
Touch Kitchen Faucet
Full Tile Shower
Assist Handle in Shower

FEATURES & OPTIONS

MANABLOC® Plumbing System
Power Water Hose Reel
Dometic® Concerto Electric Flush or Macerator Stool*
Exterior Convenience Station with Hot/Cold Water, Soap & Towel Dispenser
Sewage & Grey Holding Tank Rinse
Water Filter for Entire Unit
Automatic Fill For Fresh Water Tank

OPTIONS
Fold-Down Shower Seat
Hot Water Line to Generator Area
Black China Bowl Stools
RV Sani-Con System



CONSTRUCTION
FEATURES

Fiberglass Roof with Walkable Decking & Integrated Gutter Rail
Gel Coated Fiberglass Exterior Sidewalls, Front and Rear Caps
Aluminum-Frame Sidewalls & Roof Construction, 16" on Center
5/8" Foam Insulation Laminated in Sidewalls & Ceiling
Mechanical Lock Arms on Non Hydraulic Slide
Polar Pak R19 Batten Insulation in Roof



WINDOWS, AWNINGS
AND VENTS

One-Piece Tinted Windshield
Frameless Double-Pane Tinted Safety-Glass Windows
Fan-Tastic® Vent with Rain Sensor in Kitchen and Bathroom
Two Girard® Nova Side Awnings with Wind Sensor, Remote Control and LED Lights
Girard® Slide-out Covers & Entrance Door & Power Awning*
Skylight Above Shower* (Floor Plan Specific)
Driver-Side Power Window
Egress Door in Rear Bathroom*
Hardwood Cover on Fan-Tastic® Vent in Kitchen and Bathroom Areas

OPTIONS
Window Above Bed Concealed Behind Sliding Doors

*Check With Dealership On Floor Plan Availability



OUR PARTNERS

Where the Finest Names in Quality and Performance are Along for the Ride

To ensure that you experience only the best in comfort, control and unsurpassed convenience in our incomparable family of Luxury Coaches, Newmar partners with the most prestigious names in mobile lifestyle, entertainment and technology. These brands

are leaders in their fields and legends in providing customers with new, unsurpassed levels of quality and reliability. Best-in-class performance from names you can trust. At Newmar, that's our difference. And our promise.



THE MILLER WAY

*Industry-Leading Quality,
From Our Family to Yours*

For the Miller family, RVs are what we build because RVing is what we love. To us, the RV lifestyle is more than our business – it's our passion. Our customers choose Newmar time and time again because they trust in us, our products and our people.

I myself am proud to own a Dutch Star designed, assembled and backed by artisans, engineers and service specialists who represent the best our industry has to offer. Men and women who have spent an average of 13 years as members of the Newmar family. Without them, The Newmar Difference simply wouldn't exist.

Matt Miller
Newmar President, lifelong motor coach enthusiast



NEWMAR EXPRESS LIMITED WARRANTY

Every Essex diesel motor coach is backed by Newmar's one-year limited warranty/unlimited miles. Ask your Newmar dealer for details.

LIMITED FIVE-YEAR STRUCTURAL WARRANTY

If any part of your Newmar recreational vehicle superstructure (which is the steel/aluminum structure of the sidewall, roof or frame) fails to perform properly within five years from the date of purchase because of faulty workmanship or material supplied by Newmar, it will be repaired without charge for either parts or labor by Newmar. This structural warranty is available only to the original purchaser and is non-transferable.

Some features in our literature are optional. Colors and finishes are photographic representations. The actual materials may look different. Prices, specifications and floor plans are subject to change at Newmar's discretion, without prior notice or obligation. Please see your dealer for actual samples and specifications.



WHEN YOU KNOW THE DIFFERENCE SM