

BAY STAR BAY STAR SPORT

2017 Gas Motor Coaches



NEWMARSM

WHEN YOU KNOW THE DIFFERENCESM



discover the difference



LIVE YOUR *dream*

The **2017 Bay Star Sport** gives you the freedom to travel in both comfort and style. Featuring a level of craftsmanship you'll only find in a Newmar, every Bay Star Sport is assembled by hand and showcases elements like a new backlit wood fascia, glazed maple cabinetry and solid-surface countertops throughout. Looking for more? The **2017 Bay Star** offers 10 distinct floor plan options – more than any other coach in its class. And every Bay Star includes new Flexsteel® Ultralux two-tone leather captain's chairs with passenger footrest and workstation.



Experience the Newmar Difference for yourself. Explore each of the following sections for a complete look at the 2017 Bay Star Sport. Let's begin!

01

LIVING AREA

03

BED/BATH

02

KITCHEN

04

EXTERIOR



Full-paint Masterpiece™ Finish | Anthracite Exterior - Floor Plan 3208



2017

BAY STAR SPORT

Explore Your World

OPTIONS

7 floor plans, including a triple-slide option with dropdown bunk bed (3306)

ENTERTAINMENT

Custom-tuned JBL® premium cockpit audio system

LUXURY

Flexsteel® Ultralux leather furniture

CONVENIENCE

Carefree Travel'r® power side awning, frameless windows and lit exterior storage



01

EVERY INCH *matters*

The beauty of the 2017 Bay Star Sport lies in its extra attention to detail, beginning with an all-new soft-surface ceiling, backlit wood fascia and upscale window treatments. Flexsteel® Ultralux leather seating provides softness and support you'll appreciate, while the Vizio® LED TV and available Fold-n-Tumble sofa team up to help you accommodate friends and family.



Anthracite décor with new vinyl tile flooring - Floor Plan 3208



A PLACE FOR *everything*



Available partial Ultralux leather buffet dinette - Floor Plan 3208

02

Searching for space? You'll find it inside Bay Star Sport, where you're presented with a large wood pantry, roomy countertop and a double sink made of stainless steel. A generous helping of overhead cabinetry delivers even more storage, while a three-burner stovetop and oven combine with an above-the-range microwave to help make mealtime easy.

Solid-surface countertop with Sienna Glazed Maple cabinetry



03

PEACE AND *quiet*

For those who find silence to be a virtue, Bay Star Sport houses a master bedroom that can be shielded from the rest of the coach thanks to a specially designed “pocket” door. Inside, a smooth-top Queen mattress touts a new quilted bedspread and two-tone headboard, while a tasteful master bath sits just steps away from a sizeable hallway linen closet.



36"x30" shower with Sienna Glazed Maple cabinetry



Full-paint Masterpiece™ Finish | Anthracite Exterior - Floor Plan 3208



04

QUALITY YOU CAN *count on*

At Newmar, we believe quality is something that must be reaffirmed time and time again. It's why every 2017 Bay Star Sport is built on a proven Ford® F-53 chassis complete with Bilstein™ shock absorbers and a 320-horsepower V10 engine. DuraShield™ film protects the front cap against stone chips, and an ultra-reliable 4.0 kW Cummins® Onan generator comes standard.

BAY STAR SPORT EXTERIOR & INTERIOR *décor*



ANTHRACITE EXTERIOR

Awning Color: Gray Dune Stripe



ANTHRACITE INTERIOR

a. Furniture b. Accent Fabric c. Flooring d. Carpet e. Counter Top



FOSSIL EXTERIOR

Awning Color: Sierra Brown Dune Stripe



FOSSIL INTERIOR

a. Furniture b. Accent Fabric c. Flooring d. Carpet e. Counter Top

BAY STAR SPORT *floor plans*



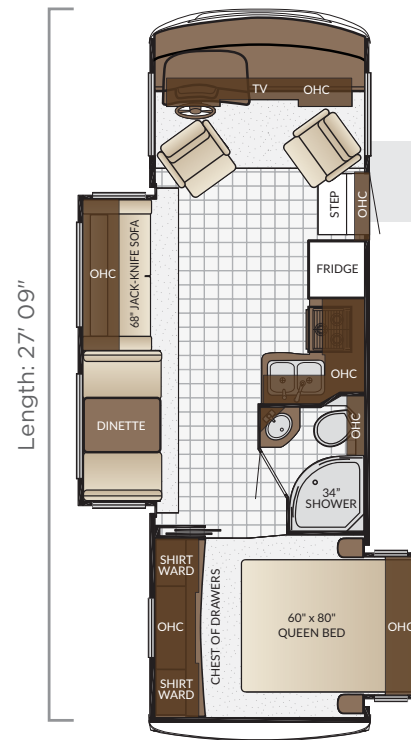
ASTORIA GLAZED MAPLE



EMPIRE GLAZED MAPLE

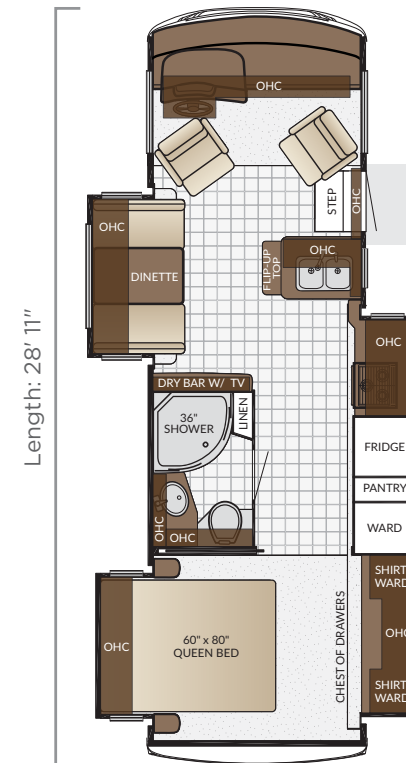


SIENNA GLAZED MAPLE



2702

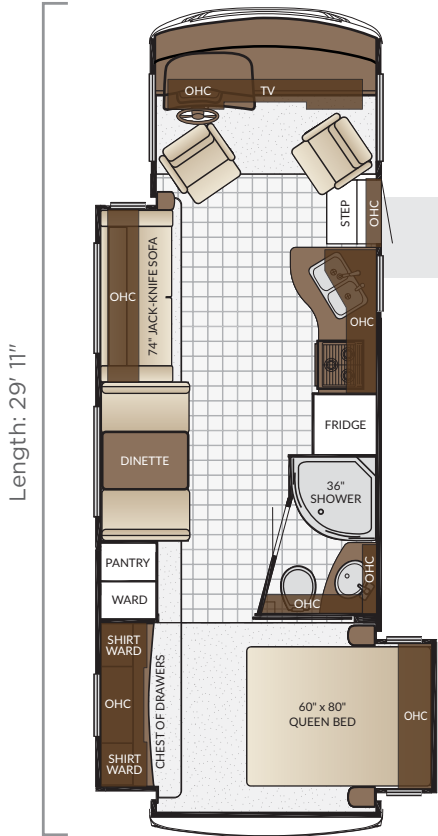
Length	27'09"
Width	101.5"
App. Overall Height	12'04"
Interior Width	95.5"
Interior Height	80"
Grey Tank	60 gal.
Sewage Tank	40 gal.
Water Tank	75 gal.
Propane Tank	25 gal.
Furnace	30,000 btu



2812

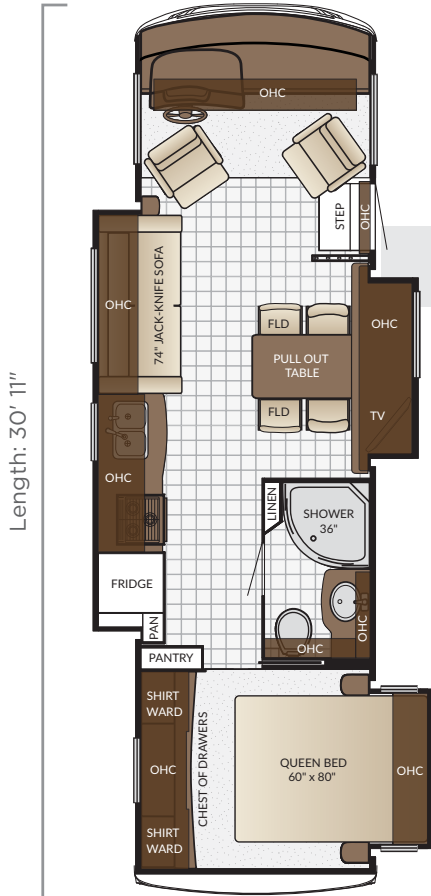
Length	28'11"
Width	101.5"
App. Overall Height	12'04"
Interior Width	95.5"
Interior Height	80"
Grey Tank	60 gal.
Sewage Tank	40 gal.
Water Tank	75 gal.
Propane Tank	25 gal.
Furnace	30,000 btu

BAY STAR SPORT *floor plans*



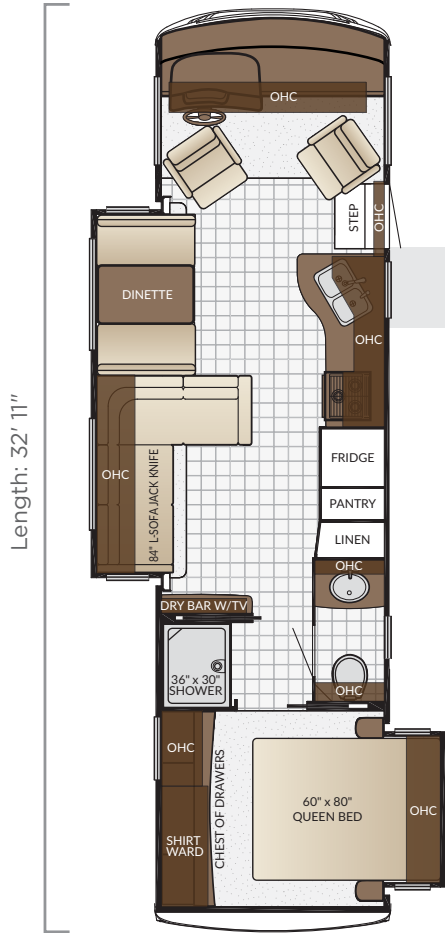
2903

Length	29'11"
Width	101.5"
App. Overall Height	12'04"
Interior Width	95.5"
Interior Height	80"
Grey Tank	60 gal.
Sewage Tank	40 gal.
Water Tank	75 gal.
Propane Tank	25 gal.
Furnace	30,000 btu



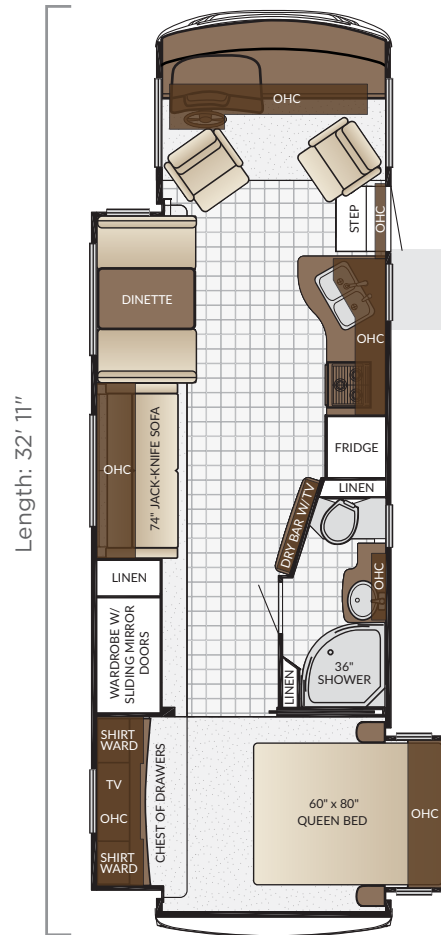
3013

Length	30'11"
Width	101.5"
App. Overall Height	12'04"
Interior Width	95.5"
Interior Height	80"
Grey Tank	60 gal.
Sewage Tank	40 gal.
Water Tank	75 gal.
Propane Tank	25 gal.
Furnace	30,000 btu



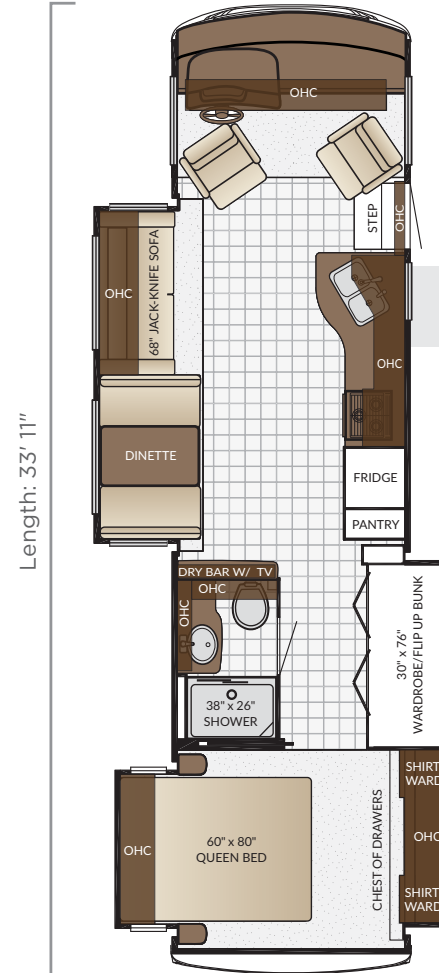
3208

Length	32'11"
Width	101.5"
App. Overall Height	12'04"
Interior Width	95.5"
Interior Height	80"
Grey Tank	60 gal.
Sewage Tank	40 gal.
Water Tank	75 gal.
Propane Tank	25 gal.
Furnace	30,000 btu



3210

Length	32'11"
Width	101.5"
App. Overall Height	12'04"
Interior Width	95.5"
Interior Height	80"
Grey Tank	60 gal.
Sewage Tank	40 gal.
Water Tank	75 gal.
Propane Tank	25 gal.
Furnace	30,000 btu



3306

Length	33'11"
Width	101.5"
App. Overall Height	12'04"
Interior Width	95.5"
Interior Height	80"
Grey Tank	60 gal.
Sewage Tank	40 gal.
Water Tank	75 gal.
Propane Tank	25 gal.
Furnace	30,000 btu

BAY STAR SPORT FEATURES & OPTIONS

EXTERIOR

EXTERIOR FEATURES

Exterior Masterpiece™ Full Painted Graphics with Clearcoat Finish

DuraShield® Protection on Front Cap

Lighted Exterior Storage Compartments

Automatic Step for Entrance Door

Convex Exterior Mirrors

Rear Hitch for Towing Car

Assist Handle at Entrance Door

Undercoating

Mud Flaps

OPTIONS

Convex Exterior Mirrors with Defrost and Remote Control

Hydraulic Leveling Jacks

Rear Ladder

CONSTRUCTION FEATURES

BriteTEK™ Roof with Walkable Decking

Gelcoated Fiberglass Exterior Sidewalls, Front & Rear Caps

Aluminum-Frame Sidewalls & Roof Construction, on 16" Center

5/8" Foam Insulation Laminated in Sidewalls & Ceiling

MECHANICAL & ELECTRICAL

WINDOWS, AWNINGS, & VENTS

One Piece Tinted Windshield

Frameless Single Pane Tinted Safety-Glass Windows

Power Vent in Bathroom

Skylight Above Shower

Carefree Travel'r® Side Awning

OPTIONS

Slideout Covers

Frameless Double-Pane Tinted Safety Glass Windows

Rear Window in Bedroom

Power Vent in Kitchen

Bunk Windows*

CHASSIS FEATURES

Ford® F-53 Chassis 18,000 lb. on 27' Floorplans

Ford® F-53 Chassis 20,500 lb. on 28'-33' Floorplans

Cruise Control

Tilt Steering Wheel

Stainless Steel Wheel Simulators

Stabilizer Bars Front & Rear

AIR CONDITIONING & HEATING

13.5M Brisk® Central Air Conditioner

Dash Heater and Air Conditioner

Propane Gas Furnace with Ducted Heat

OPTIONS

15.0M Penguin™ Heat Pump Central Air Conditioner

Driver & Passenger Overhead Dash Fans

Two 13.5 Penguin Heat Pump A/C, 5.5 Onan Generator, 50 Amp Electrical Service with Energy Management System*

ELECTRICAL FEATURES

4.0 kW Cummins Onan® Generator with Remote Switch and Automatic Changeover

30 Amp Electrical Service with Flexible Cord and Automatic Transfer Switch

Two 12 Volt House Batteries

Manual Battery Disconnect Switch for House Battery

12 Volt Auxiliary Receptacle on Dashboard

45 Amp Converter

Daytime Running Lights

Emergency Engine Start Switch

Incandescent Ceiling Lights Throughout

Manually Operated Hold-To-Run Slideout Switch

Cable TV Connection

OPTIONS

1000 Watt Inverter Ran to TV's

PLUMBING

PLUMBING & BATH FEATURES

Demand Water System

Sewage Holding-Tank Rinse

Water Heater Bypass System

Dometic® 310 China Bowl Stool

ABS Shower Surround with Shower Door

Systems Monitor Panel

INTERIOR FEATURES

Vinyl Ceiling Panels

Pleated Window Shades

Decorative Wall Art

Mini Blinds in Kitchen and Bathroom Windows

Vinyl Floor in Kitchen, Living Area and Bathroom

Carpeting in Bedroom and on Slideout floor

Interior Assist Handle at Main Entrance Door

Quilted Bedspread and Accent Pillows

Inlaid Six Panel Design Interior Passenger Doors

Auto Motion Power Shade at Windshield & Manual
Shades at Driver & Passenger Side Windows

Dash Panel Color Coordinated ABS

10 Bc Fire Extinguisher, Smoke Detector, Propane and
Carbon Monoxide Detector

INTERIOR

APPLIANCES

Three-Burner Range with Oven

Range Hood with Light and Fan*

Microwave

Dometic® 6 Cf. Refrigerator with Wood Paneling Front

6 gal. Gas Water Heater with Direct Spark Ignition

CABINETS & FURNITURE

Empire Maple Mitered Designer Glazed Cabinet Doors

Concealed Hinges on Cabinet Doors

Drawers with Full Extension Ball Bearing Guides

Polished Solid Surface Countertop in Kitchen with
Stainless Steel Sink

Solid Surface Countertops in Bathroom and Bedroom

Flexsteel® Ultralux Leather Sofa and Front Seats

Lifts on Bed Top

Smooth-Top Mattress

OPTIONS

Astoria Maple Mitered Designer Glazed Cabinets

Sienna Maple Mitered Designer Glazed Cabinets

Drop Down Bunk Bed Over Driver/Passenger Seats
with Electric Release Latches*

Plush Pillow Top Mattress

Folding Cockpit Table

Off Door Side Fold & Tumble Sofa with Air Mattress

74" Fold & Tumble & 71" Dinette in Place of 84"
Jack Knife L-Sofa & 69" Dinette with End Table*

ENTERTAINMENT

84" Jack Knife Sofa in Place of 84" Jack Knife L-Sofa*

Buffet Dinette

Combo Buffet Dinette, with Four Chairs
(Two Fixed/Two Folding)*

Sofa with Removable Table 2812 Only

AUDIO, VIDEO & ACCESSORIES

LED TV in Living Area (TV sizes vary per Floorplan)

Dash Radio/CD Player with Harman®/JBL® 180
Watt Sound System

Rearview Color Monitor System with Audio

Winegard® Digital TV Antenna

TV Jack and 110 Volt Recept in Door Side Exterior
Storage Compartment

OPTIONS

28" LED TV in Bedroom

DVD Player with Coax Switcher

Satellite Dish Prep on Roof

*Check with dealership on floor plan availability.

The content in our literature depicts and describes products
that are subject to change. For the most recent images and
information, please visit NewmarCorp.com.



Full-paint Masterpiece™ Finish | Intrigue Exterior - Floor Plan 3333



2017 BAY STAR

It's All Here

CHOICES

10 floor plan options, with half-baths now included on select layouts

TECHNOLOGY

Newly available exterior-mounted Sony® LED TV

EXTRAS

Options like a Hide-a-Bed sofa and Sony® surround sound system

STRENGTH

Durable Ford® F-53 chassis with 22,000 lb. GVWR

Explore each of the following sections for a complete look at the 2017 Bay Star.

- 01 LIVING AREA
- 02 KITCHEN
- 03 BED/BATH
- 04 EXTERIOR



01

THE GOOD LIFE *awaits*

Bay Star now offers a dropdown bunk bed on select floor plans that's as simple to operate as it is convenient. That's because it unlocks with the flick of a switch thanks to an electric release hatch and folds up and out of sight with ease. Standard Flexsteel® Ultralux leather furniture is led by a stylish new sofa, while the 180-watt JBL® cockpit audio system can be joined with an available 48" Sony® LED TV and electric fireplace.



Intrigue décor with available vinyl tile flooring – Floor Plan 3333



THE RIGHT *mix*



Available Hide-a-Leaf dinette

02

Every Bay Star features a large galley and spacious pantry, and comes filled with amenities that will make every journey one to remember. Take the available Hide-a-Leaf dinette, which includes two fixed and two folding chairs. And don't forget about the solid-surface countertops, which glimmer underneath Bay Star's standard LED lighting.

Solid-surface countertop with Astoria Maple Glazed cabinetry



03

ESCAPE THE *everyday*

Hit the road in a 2017 Bay Star and embrace a tasteful master suite that's a destination all its own. Rest easy on a full queen bed with delightful accents that begin with glazed maple cabinetry and continue with all-new deluxe window treatments. Each morning can be made as bright as you'd like, as Bay Star's full bath lets you choose between gorgeous vanity lighting or natural rays courtesy of a shower skylight.



36"x30" shower with Astoria Glazed Maple cabinetry



Full-paint Masterpiece™ Finish | Intrigue Exterior



04

ENGINEERED TO *enjoy*

When your coach is a Bay Star, there's always fun to be had, even when the wheels aren't in motion. Tailgate on your terms using the standard Dometic® Weather Pro power side awning and available exterior entertainment center. Or simply stand by as others marvel at your Bay Star's full-paint Masterpiece™ finish. Either way, when it's time to head out, a color rearview monitoring system is there to help.

BAY STAR EXTERIOR & INTERIOR *décor*



ANGORA EXTERIOR

Awning Color: Linen Tweed



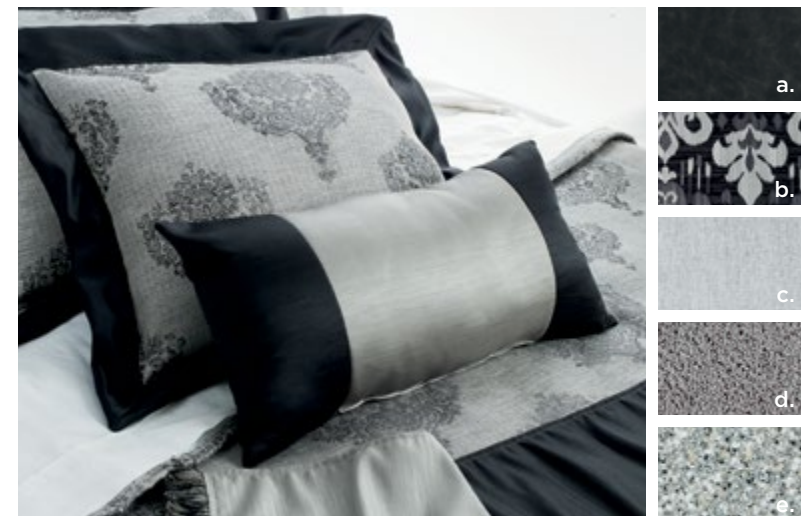
ANGORA INTERIOR

a. Furniture b. Accent Fabric c. Accent Fabric d. Carpet e. Counter Top



INTRIGUE EXTERIOR

Awning Color: Charcoal Tweed



INTRIGUE INTERIOR

a. Furniture b. Accent Fabric c. Accent Fabric d. Carpet e. Counter Top

FLOORING OPTIONS



ASTORIA FLOORING



SIENNA FLOORING



EMPIRE FLOORING

WOOD OPTIONS



ASTORIA GLAZED MAPLE

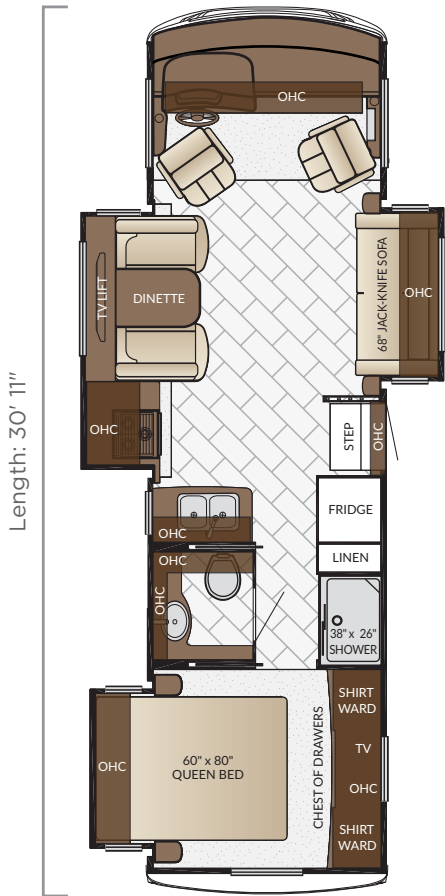


SIENNA GLAZED MAPLE



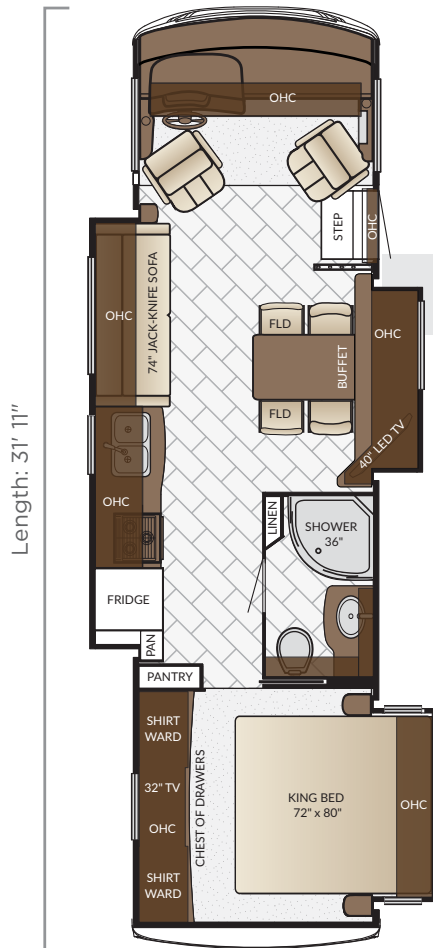
EMPIRE GLAZED MAPLE

BAY STAR *floor plans*



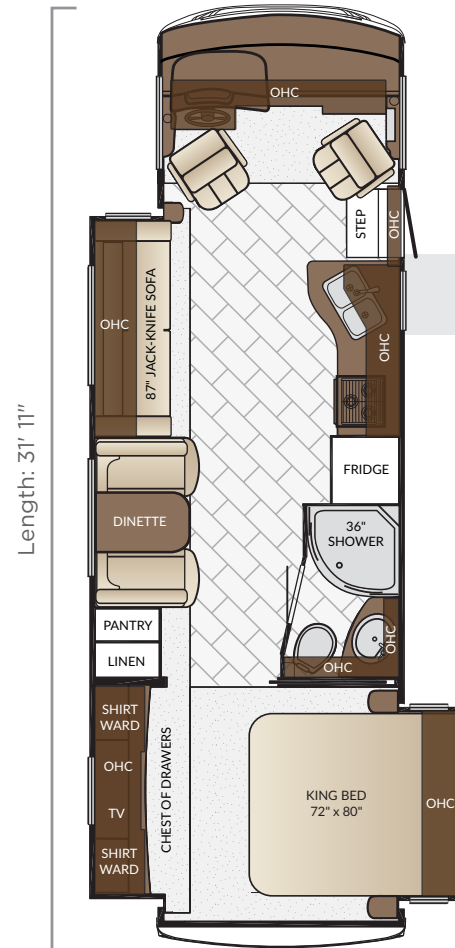
3009

Length	30'11"
Width	101.5"
App. Overall Height	12'08"
Interior Width	95.5"
Interior Height	80"
Grey Tank	60 gal.
Sewage Tank	40 gal.
Water Tank	75 gal.
Propane Tank	25 gal.
Furnace	40,000 btu



3113

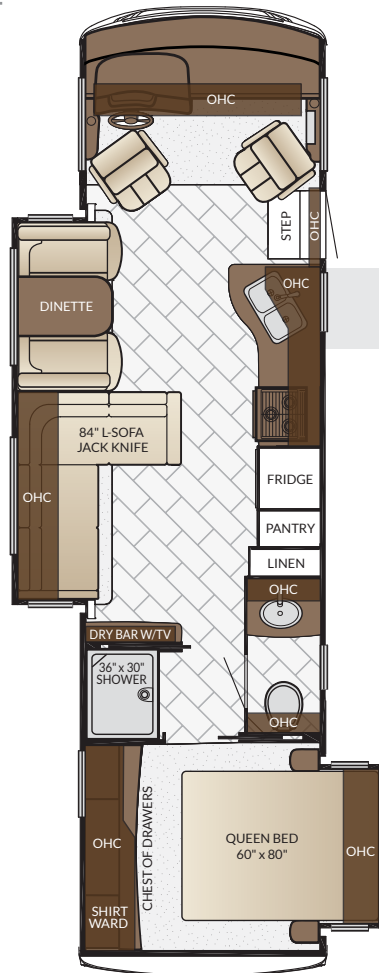
Length	31'11"
Width	101.5"
App. Overall Height	12'08"
Interior Width	95.5"
Interior Height	80"
Grey Tank	60 gal.
Sewage Tank	40 gal.
Water Tank	75 gal.
Propane Tank	25 gal.
Furnace	40,000 btu



3124

Length	31'11"
Width	101.5"
App. Overall Height	12'08"
Interior Width	95.5"
Interior Height	80"
Grey Tank	60 gal.
Sewage Tank	40 gal.
Water Tank	75 gal.
Propane Tank	25 gal.
Furnace	40,000 btu

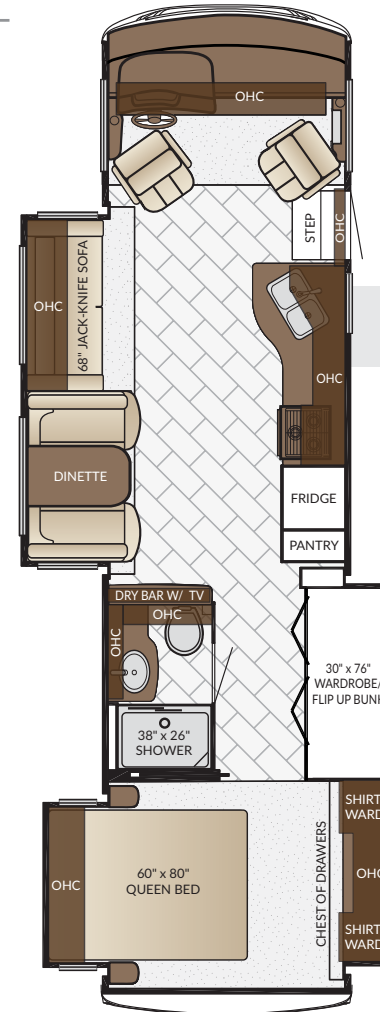
Length: 32' 11"



3208

Length	32'11"
Width	101.5"
App. Overall Height	12'08"
Interior Width	95.5"
Interior Height	80"
Grey Tank	60 gal.
Sewage Tank	40 gal.
Water Tank	75 gal.
Propane Tank	25 gal.
Furnace	40,000 btu

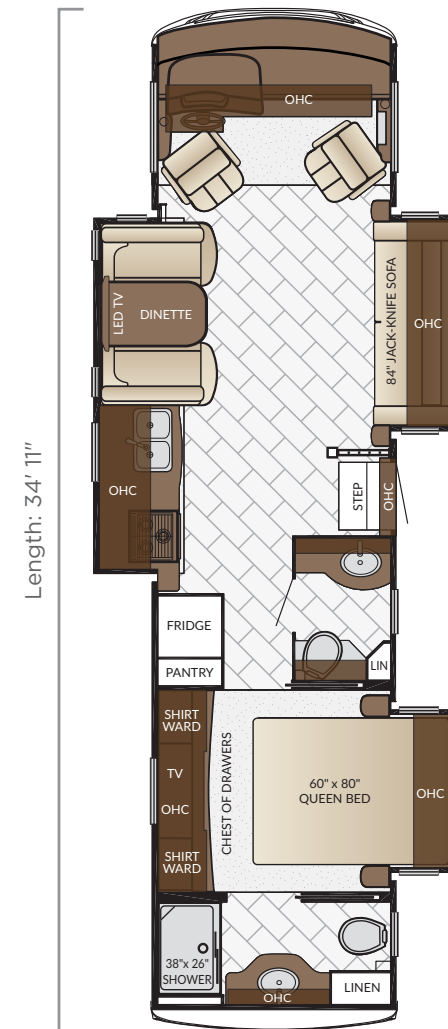
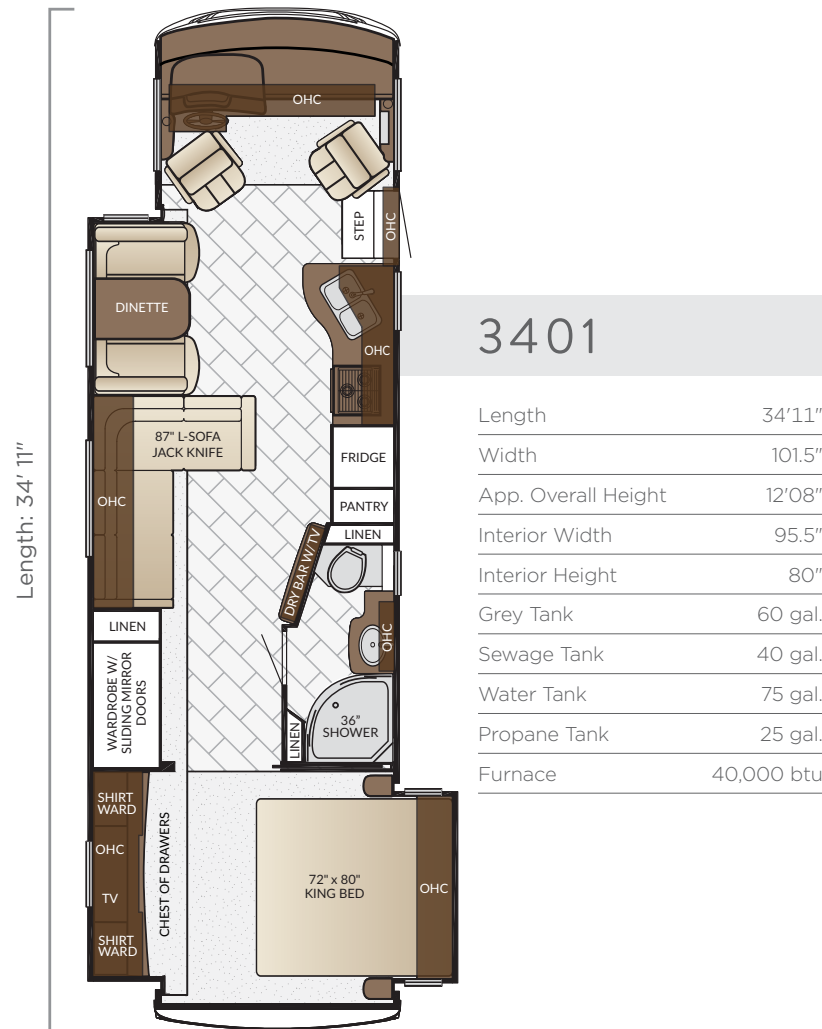
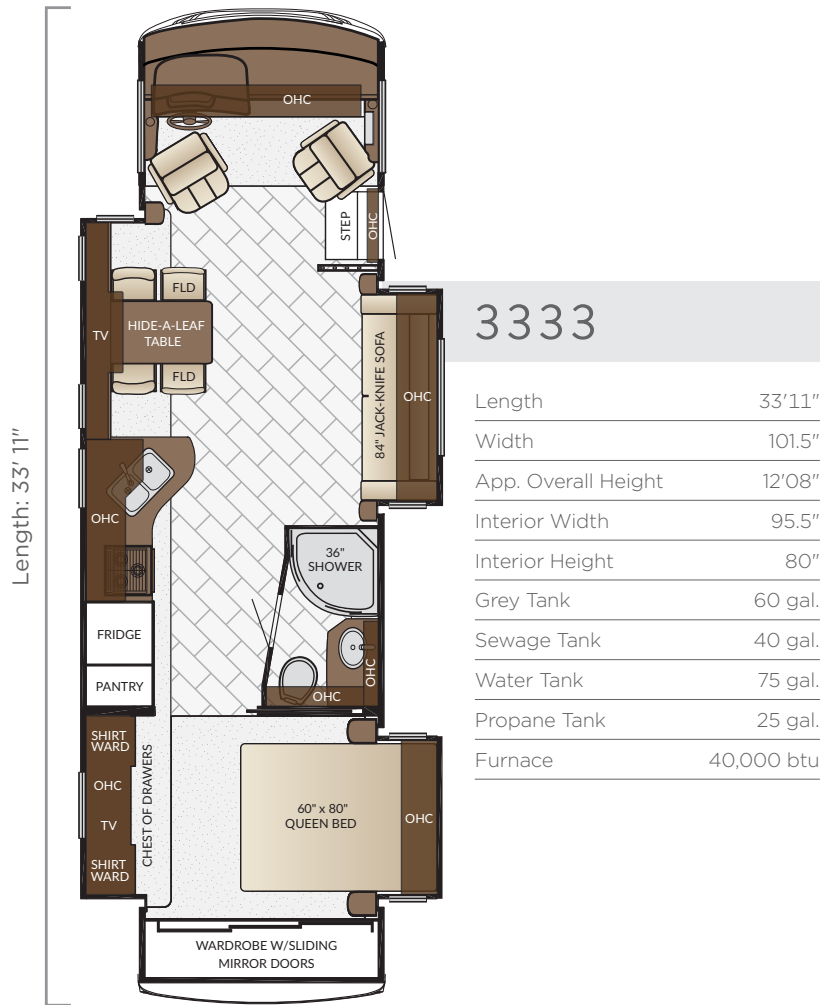
Length: 33' 11"



3306

Length	33'11"
Width	101.5"
App. Overall Height	12'08"
Interior Width	95.5"
Interior Height	80"
Grey Tank	60 gal.
Sewage Tank	40 gal.
Water Tank	75 gal.
Propane Tank	25 gal.
Furnace	40,000 btu

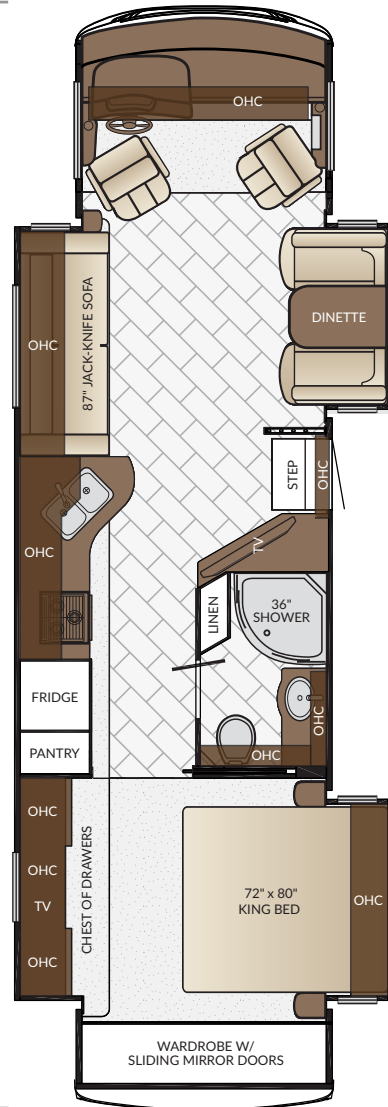
BAY STAR *floor plans*



3403

Length	34'11"
Width	101.5"
App. Overall Height	12'08"
Interior Width	95.5"
Interior Height	80"
Grey Tank	60 gal.
Sewage Tank	86 gal.
Water Tank	75 gal.
Propane Tank	25 gal.
Furnace	40,000 btu

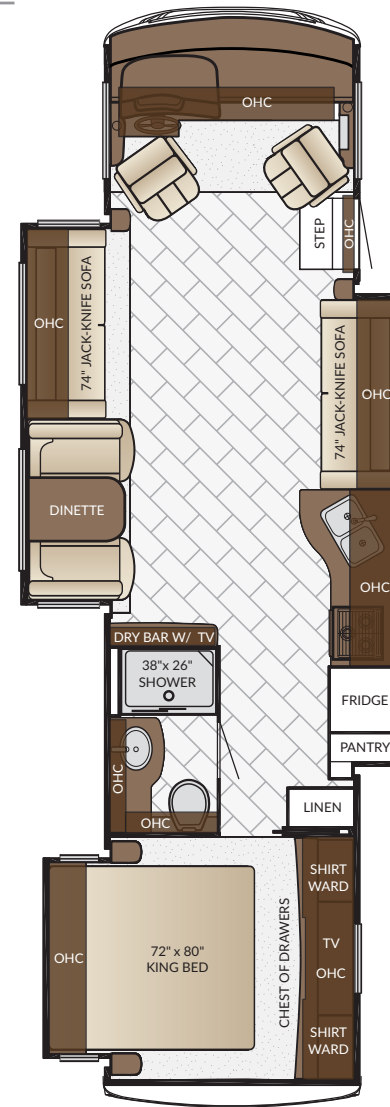
Length: 35' 11"



3516

Length	35'11"
Width	101.5"
App. Overall Height	12'08"
Interior Width	95.5"
Interior Height	80"
Grey Tank	60 gal.
Sewage Tank	40 gal.
Water Tank	75 gal.
Propane Tank	25 gal.
Furnace	40,000 btu

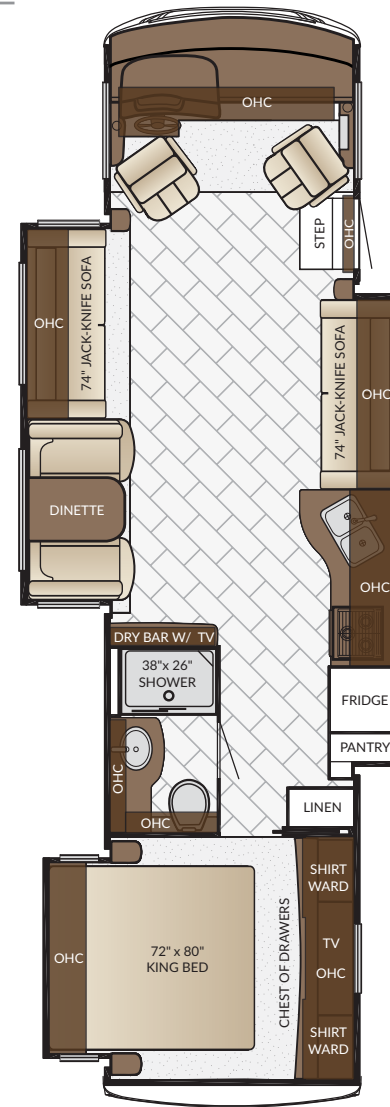
Length: 33' 11"



3518

Length	35'11"
Width	101.5"
App. Overall Height	12'08"
Interior Width	95.5"
Interior Height	80"
Grey Tank	60 gal.
Sewage Tank	40 gal.
Water Tank	75 gal.
Propane Tank	25 gal.
Furnace	40,000 btu

Length: 33' 11"



quality CONSTRUCTION

Like fine homes, the 2017 Bay Star and Bay Star Sport are framed 16 inches on center and comes covered by a BriteTEK™ roof with walkable decking.

BAY STAR SPORT

FLOOR PLAN	ENGINE HP	AXLE RATIO	FUEL CAP.	WHEEL BASE	FRONT GAWR	REAR GAWR	TAG GAWR	GVWR	GCWR	APP. UVW	APP. NCC
2702	320	4.3	80 gal.	172	7000 lb.	12000 lb.	n/a	18000 lb.	23000 lb.	15191 lb.	2809 lb.
2812	320	5.38	80 gal.	190	7500 lb.	13500 lb.	n/a	20500 lb.	26000 lb.	16320 lb.	4180 lb.
2903	320	5.38	80 gal.	190	7500 lb.	13500 lb.	n/a	20500 lb.	26000 lb.	16395 lb.	4105 lb.
3013	320	5.38	80 gal.	200	7500 lb.	13500 lb.	n/a	20500 lb.	26000 lb.	16816 lb.	3684 lb.
3208	320	5.38	80 gal.	200	7500 lb.	13500 lb.	n/a	20500 lb.	26000 lb.	17239 lb.	3261 lb.
3210	320	5.38	80 gal.	200	7500 lb.	13500 lb.	n/a	20500 lb.	26000 lb.	17322 lb.	3178 lb.
3306	320	5.38	80 gal.	216	7500 lb.	13500 lb.	n/a	20500 lb.	26000 lb.	17664 lb.	2836 lb.

BAY STAR

FLOOR PLAN	ENGINE HP	AXLE RATIO	FUEL CAP.	WHEEL BASE	FRONT GAWR	REAR GAWR	TAG GAWR	GVWR	GCWR	APP. UVW	APP. NCC
3009	320	5.38	80 gal.	200	8000 lb.	15000 lb.	n/a	22000 lb.	26000 lb.	17494 lb.	4506 lb.
3113	320	5.38	80 gal.	200	8000 lb.	15000 lb.	n/a	22000 lb.	26000 lb.	17834 lb.	4166 lb.
3124	320	5.38	80 gal.	200	8000 lb.	15000 lb.	n/a	22000 lb.	26000 lb.	18174 lb.	3826 lb.
3208	320	5.38	80 gal.	200	8000 lb.	15000 lb.	n/a	22000 lb.	26000 lb.	18514 lb.	3486 lb.
3306	320	5.38	80 gal.	216	8000 lb.	15000 lb.	n/a	22000 lb.	26000 lb.	18854 lb.	3146 lb.
3333	320	5.38	80 gal.	216	8000 lb.	15000 lb.	n/a	22000 lb.	26000 lb.	19114 lb.	2886 lb.
3401	320	5.38	80 gal.	220	8000 lb.	15000 lb.	n/a	22000 lb.	26000 lb.	19186 lb.	2814 lb.
3403	320	5.38	80 gal.	216	8000 lb.	15000 lb.	n/a	22000 lb.	26000 lb.	19178 lb.	2822 lb.
3516	320	5.38	80 gal.	220	8000 lb.	15000 lb.	n/a	22000 lb.	26000 lb.	19348 lb.	2652 lb.
3518	320	5.38	80 gal.	220	8000 lb.	15000 lb.	n/a	22000 lb.	26000 lb.	19322 lb.	2678 lb.

The content in our literature depicts and describes products that are subject to change. For the most recent images and information, please visit NewmarCorp.com.

Lengths, heights, widths and dry weights are approximate. Weight will vary based on optional equipment added to the above base weight.

GAWR: Gross Axle Weight Rating is the maximum permissible weight for an axle.

GVWR: Gross Vehicle Weight Rating is the maximum permissible weight for a fully loaded motor coach.

GCWR: Gross Combination Weight Rating is the value specified by the manufacturer of the vehicle as the maximum allowable loaded weight of this motor coach and any towed trailer or towed vehicle.

UVW: Unloaded Vehicle Weight is the weight of this motor coach as built at the factory with full fuel, engine oil and coolants. Does not include cargo, fresh water, propane gas or dealer-installed accessories.

NCC: Net Carrying Capacity is the maximum weight of all occupants, including the driver, personal belongings, food, fresh water, waste water, propane gas, tools, tongue weight of towed vehicle, dealer-installed accessories, etc., that can be carried by the motor coach.

Specifications supplied by the chassis manufacturer.

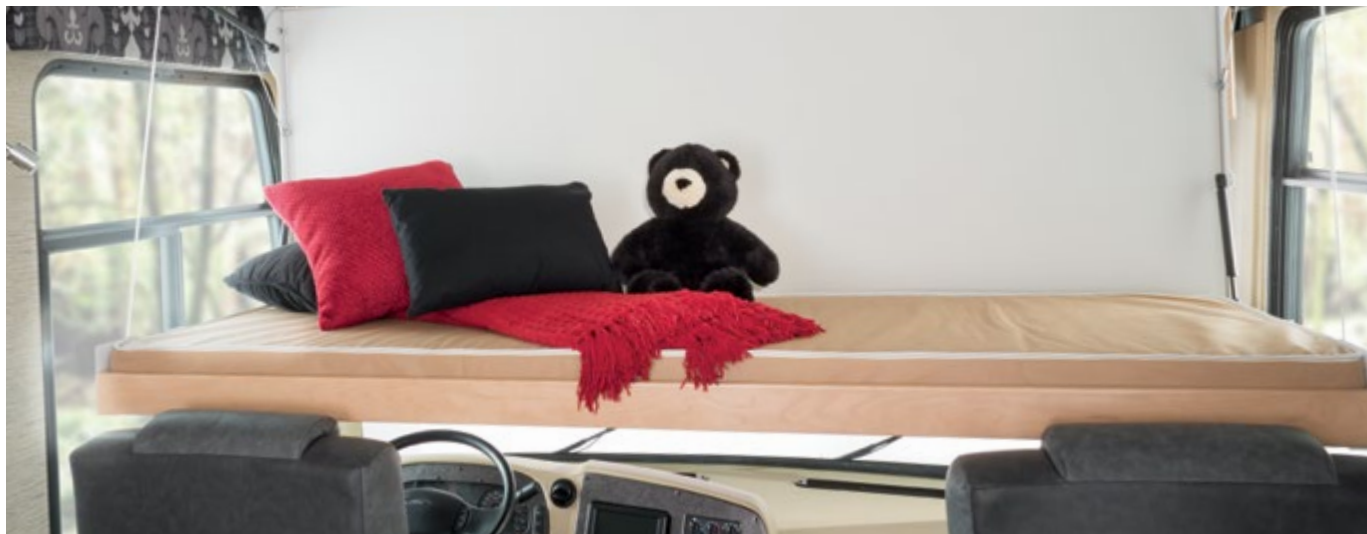
Bay Star/Bay Star Sport R-Values:

Roof R-Value = 16

Sidewall R-Value = 11

Floor R-Value = 11

BAY STAR FEATURES & OPTIONS



EXTERIOR

EXTERIOR FEATURES

Exterior Masterpiece™ Full Painted Graphics with Clearcoat Finish

DuraShield® Protection on Front Cap

Lighted Exterior Storage Compartments

Automatic Step for Entrance Door

Convex Exterior Mirrors with Defrost

Rear Hitch for Towing Car

Assist Handle at Entrance Door

Undercoating

Mud Flaps

Hydraulic Leveling Jacks

OPTIONS

Convex Exterior Mirrors with Defrost and Remote Control

Rear Ladder

CONSTRUCTION FEATURES

BriteTEK™ Roof with Walkable Decking

Gelcoated Fiberglass Exterior Sidewalls, Front & Rear Caps

Aluminum-Frame Sidewalls & Roof Construction, on 16" Center

5/8" Foam Insulation Laminated in Sidewalls & Ceiling

OPTIONS

Polar Pak R19 batten Insulation in Roof

MECHANICAL & ELECTRICAL

WINDOWS, AWNINGS, & VENTS

One Piece Tinted Windshield

Frameless Single Pane Tinted Safety-Glass Windows

Power Vent in Kitchen and Bathroom

Skylight Above Shower

Dometic® Weather Pro Side Awning with Aluminum Weather Shield

Slideout Covers

OPTIONS

Frameless Double-Pane Tinted Safety Glass Windows

Rear Window in Bedroom*

Fantastic Vent with Rain Sensor in Kitchen & Bathroom

Bunk Windows*

CHASSIS FEATURES

Ford® F-53 Chassis 22,000 lb.

Cruise Control

Tilt Steering Wheel

Aluminum Wheels

Stabilizer Bars Front & Rear

AIR CONDITIONING & HEATING

13.5M Brisk® Central Air Conditioner

Dash Heater and Air Conditioner

Driver & Passenger Overhead Dash Fans

Propane Gas Furnace with Ducted Heat

OPTIONS

15M Penguin™ Heat Pump Air Conditioner*

Two 13.5M Penguin Heat Pump A/C, 5.5 Onan Generator, 50 Amp Electrical Service with Energy Management System

Auxiliary Heater in Bedroom

ELECTRICAL FEATURES

4.0 kW Cummins Onan® Generator with Remote Switch and Automatic Changeover

30 Amp Electrical Service with Flexible Cord and Automatic Transfer Switch

Two 12 Volt House Batteries

Battery Disconnect Switch for House Battery

12 Volt Auxiliary Receptacle on Dashboard

45 Amp Converter

Daytime Running Lights

Emergency Engine Start Switch

LED Ceiling Lights

Manually Operated Hold-To-Run Slideout Switch

Cable TV Connection

10 Watt Solar Panel to Charge Chassis Battery

1000 Watt Inverter Run to Drain Lift Pump & TV's on 3333, 3403, and 3516 Floorplans

Lights in Wardrobes

USB Charger at Passenger Seat Area

OPTIONS

1000 Watt Inverter Ran to TV's*

50 Amp Electrical Service*

Solar Prep Rated for 1200 Watts with Six Gauge Wire from Roof to House Battery Compartment

PLUMBING

PLUMBING & BATH FEATURES

Demand Water System

Sewage Holding Tank Rinse

Water Heater Bypass System

Dometic® 310 China Bowl Stool

ABS Shower Surround with Shower Door

Systems Monitor Panel

Exterior Shower Located On Off Door Side

OPTIONS

110 Volt Heat Pads for Holding Tanks

INTERIOR FEATURES

Vinyl Ceiling Panels

Decorative Wall Art

Vinyl Floor in Kitchen, Living Area and Bathroom

Carpeting in Bedroom and on Slideout Floors

Interior Assist Handle at Main Entrance Door

Quilted Bedspread, Bed Scarf & Accent Pillows

Inlaid Six Panel Design Interior Passenger Doors

Auto Motion Manual Double Roller Shades on Windows Behind Driver/Passenger Area

Auto Motion Power Shade at Windshield & Manual Shades at Driver & Passenger Side Windows

Dash Panel Color Coordinated ABS

10 Bc Fire Extinguisher, Smoke Detector, Propane and Carbon Monoxide Detector

Shoe Storage Located in Entrance Door Step Compartment

OPTIONS

Vinyl Tile Floor in Place of Vinyl Floor

INTERIOR

CABINETS & FURNITURE

Empire Maple Mitered Designer Glazed Cabinet Doors

Concealed Hinges on Cabinet Doors

Drawers with Full-Extension Ball Bearing Guides

Polished Solid Surface Countertop in Kitchen with Stainless Steel Sink

Solid Surface Countertops in Bathroom and Bedroom

Flexsteel® Ultralux Leather Sofa and Front Seats

Lifts on Bed Top

Smooth-Top Mattress

Passenger Seat Work Station

Manual Foot Rest on Passenger Seat

Pullout Pantry Shelves*

OPTIONS

Astoria Maple Mitered Designer Glazed Cabinets

Sienna Maple Mitered Designer Glazed Cabinets

Combination Desk with Buffet Dinette Table, 2 Fixed & 2 Folding Chairs

Buffet Dinette with Free Standing Table

Buffet Dinette

Free Standing Hidden Leaf Dinette Table, 2 Fixed & 2 Folding Chairs

Drop Down Bunk Bed Over Driver/Passenger Seats with Electric Release Latches*

Drop Down Bunk Bed Over Driver/Passenger Seats with Electric Release Latches and 32" TV in Front Overhead*

Plush Pillow Top Mattress

Folding Cockpit Table

Hide A Bed Sofa

Off Door Side-Side Opening Hide-A-Bed Sofa

Combination Desk/Dinette with Free Standing Hidden Leaf Table, 2 Fixed & 2 Folding Chairs

Six Way Power for Driver Seat

84" Hide-A-Bed Sofa in Place of 84" Jack Knife L-Sofa

APPLIANCES & ACCESSORIES

Three-Burner Range with Oven

30" Over the Range Microwave

Norcold® 8 Cf. Refrigerator with Black Panel Front

6 gal. Gas/Electric Water Heater with Electronic Ignition

OPTIONS

Frigidaire® 10 Cf. Refrigerator with Dedicated 1000 Watt Pure Sine Inverter & 2 Extra Batteries

Icemaker Added to Standard Norcold Refrigerator

30" Convection Microwave with Three-Burner Cooktop

Fireplace in Living Area (Requires 50 amp Service Option*)

ENTERTAINMENT

AUDIO, VIDEO & ACCESSORIES

Sony® LED TV & DVD Player in Living and Bedroom Areas (TV sizes vary per floorplan)

Dash Radio/CD Player with Harman®/JBL® 180 Watt Sound System

Rearview Colored Monitor System with Audio

Winegard® Digital Crank Up TV Antenna

Satellite Dish Prep on Roof

High Definition Component Wiring

Bluetooth Microphone for Sony Dash Radio

TV Jack and 110 Volt Recept in Door Side Exterior Storage Compartment

OPTIONS

32" LED TV in Front Overhead

32" LED TV Exterior TV Only

Blu-Ray Disc Player

Side View Cameras Displayed onto Rear View Monitor Screen

SiriusXM® Radio Capability with Antenna (Does Not Include Monthly Subscription)

Sony® Surround Sound with Sub-Woofer

Winegard® Automatic Open Face Satellite Dish

Winegard® Automatic Dome Satellite Dish

Winegard® in Motion Dome Satellite Dish

*Check with dealership on floor plan availability.

The content in our literature depicts and describes products that are subject to change.
For the most recent images and information, please visit NewmarCorp.com.

THE NEWMAR *customer* EXPERIENCE

The Newmar Difference goes beyond our industry-leading motor coaches to deliver you with an unrivaled ownership experience.



QUALITY FROM THE START

Every Newmar is crafted one at a time by folks who have spent an average of 13 years building them. And each coach we assemble must undergo more than 1,000 quality checks before ever leaving the Newmar factory.



SEAMLESS SERVICE

Available 24/7, our service specialists ship in-stock parts to arrive the next day. And if a part is out of stock, we'll pull it from the production floor. It's all about getting you back out on the road A.S.A.P.



EVERYTHING – ALL IN ONE PLACE

As a Newmar owner, you'll find dozens of resources specific to your coach through Newgle, an easy-to-use knowledge base that houses everything from user guides to technical support documents.



WE HAVE YOUR BACK

Should you find yourself in need of roadside assistance, we'll send a mobile service technician out to assist you virtually anywhere in North America.



FRIENDS FOR LIFE

Join Newmar and meet fellow owners through the Newmar Kountry Klub, a top social club for RV travelers for close to 30 years. Or, connect using the world's only social sharing website created for RVers, by RVers – GoNewmar.com.



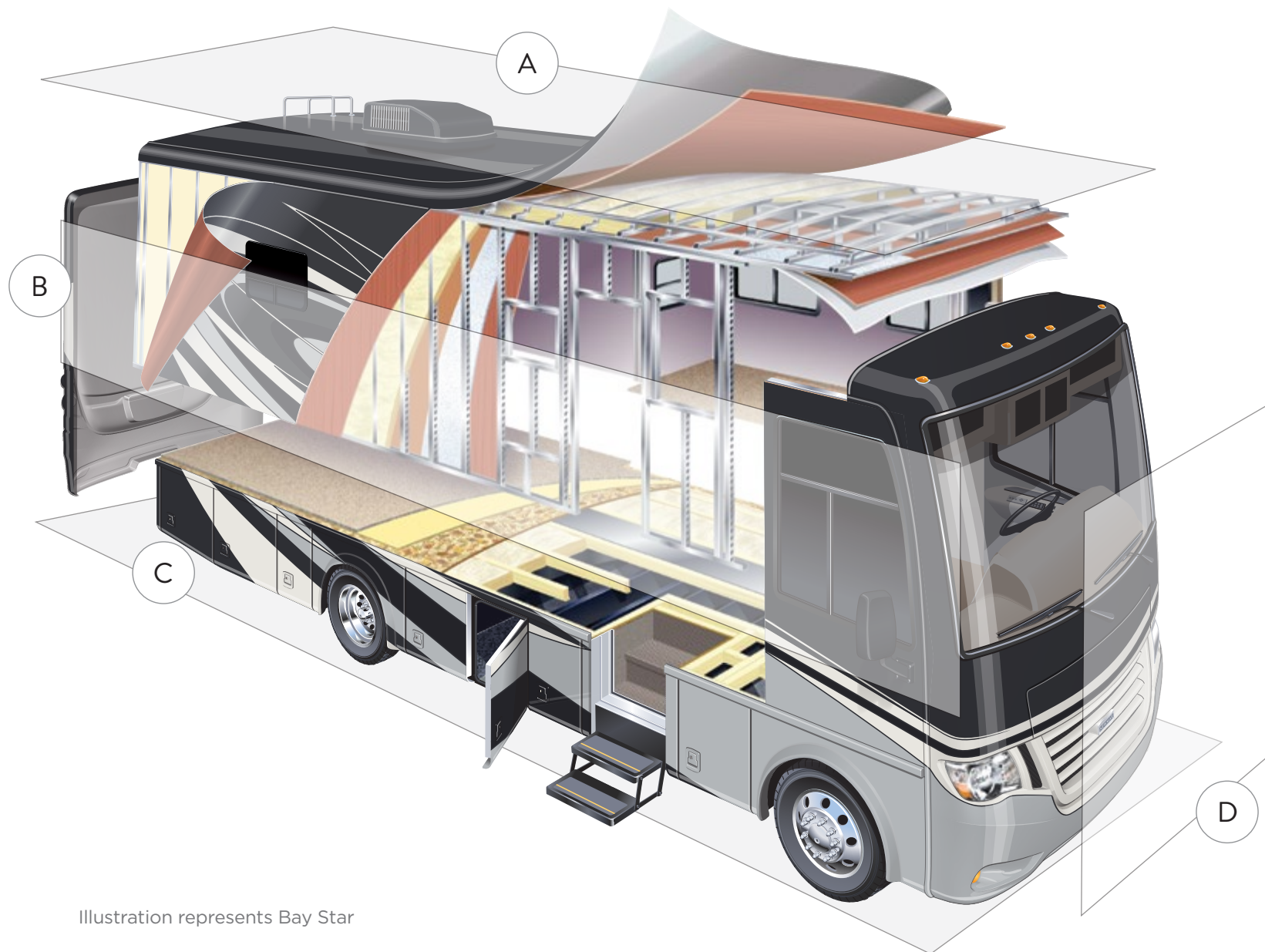
ROCK-SOLID WARRANTY COVERAGE

All models include a 1-year/unlimited mileage limited warranty and a 5-year, non-transferable structural warranty that covers your vehicle's superstructure in the event it fails to perform. *Ask your Newmar dealer for details.*



WE'RE HERE TO HELP

Have a question? Need to file a claim? Our Warranty team is ready, willing and able to do whatever it takes to make things right, right away.



A. ROOF

BriteTek Roof with Walkable Decking
 Batten Insulation
 A/C Ducting
 16" on Center Aluminum Framing
 Kraft Paper Vapor Barrier
 5/8" Bead Foam
 3/16" Panel
 Padded Vinyl Overlay

B. SIDEWALL

Interior Wall Panel
 5/8" Bead Foam
 Kraft Paper Vapor Barrier
 Batten Insulation
 Composite One-Piece Gelcoat Exterior Wall
 Aluminum Framing

Illustration represents Bay Star

C. FLOOR

Carpet	Batten Insulation
Carpet Padding	16" on Center Wood Framing
5/8" Floor Decking	Polyethylene Moisture Barrier

D. EXTERIOR

13.5M Brisk Central Air Conditioner	Frameless, Tinted Safety-Glass Windows
One-Piece Windshield	

OUR PARTNERS

*Where the Finest Names in Quality and Performance
are Along for the Ride*

To ensure that you experience only the best in comfort, control and unsurpassed convenience in our incomparable family of Luxury Coaches, Newmar partners with the most prestigious names in mobile lifestyle, entertainment and technology. These brands are leaders in their fields and legends in providing customers with new, unsurpassed levels of quality and reliability. Best-in-class performance from names you can trust. At Newmar, that's our difference. And our promise.

Partners

Freightliner® Custom Chassis

Freightliner Custom Chassis are renowned for their exceptional ride, responsive handling characteristics and extraordinary reliability.

Sony®

Sony brings the best in entertainment technology to your home on wheels through cutting-edge 4K and LED TVs, Blu-ray players and more.

Spartan® Chassis

Spartan Chassis consistently deliver superior performance, exceptional safety ratings and industry-leading technology.





THE MILLER WAY

*Industry-Leading Quality,
From Our Family to Yours*

For the Miller family, RVs are what we build because RVing is what we love. To us, the RV lifestyle is more than our business – it's our passion. Our customers choose Newmar time and time again because they trust in us, our products and our people.

I myself am proud to own a Dutch Star designed, assembled and backed by artisans, engineers and service specialists who represent the best our industry has to offer. Men and women who have spent an average of 13 years as members of the Newmar family. Without them, The Newmar Difference simply wouldn't exist.

Matt Miller

Newmar President, lifelong motor coach enthusiast



WHEN YOU KNOW THE *difference*



NEWMAR CORPORATION | 355 N DELAWARE ST | PO BOX 30 | NAPPANEE, IN 46550-0030 | 574-773-7791 | FAX 574-773-2895

www.newmarcorp.com