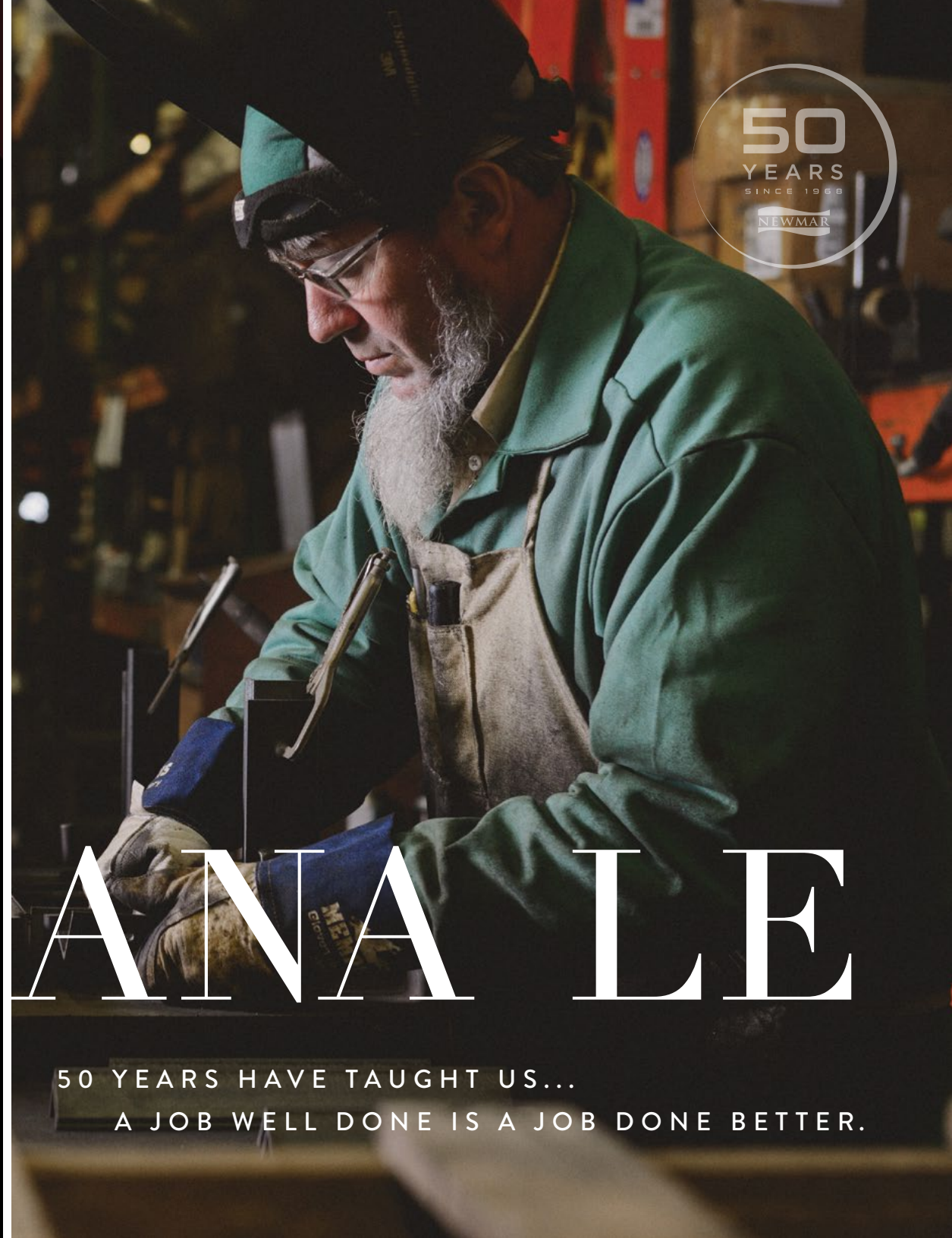
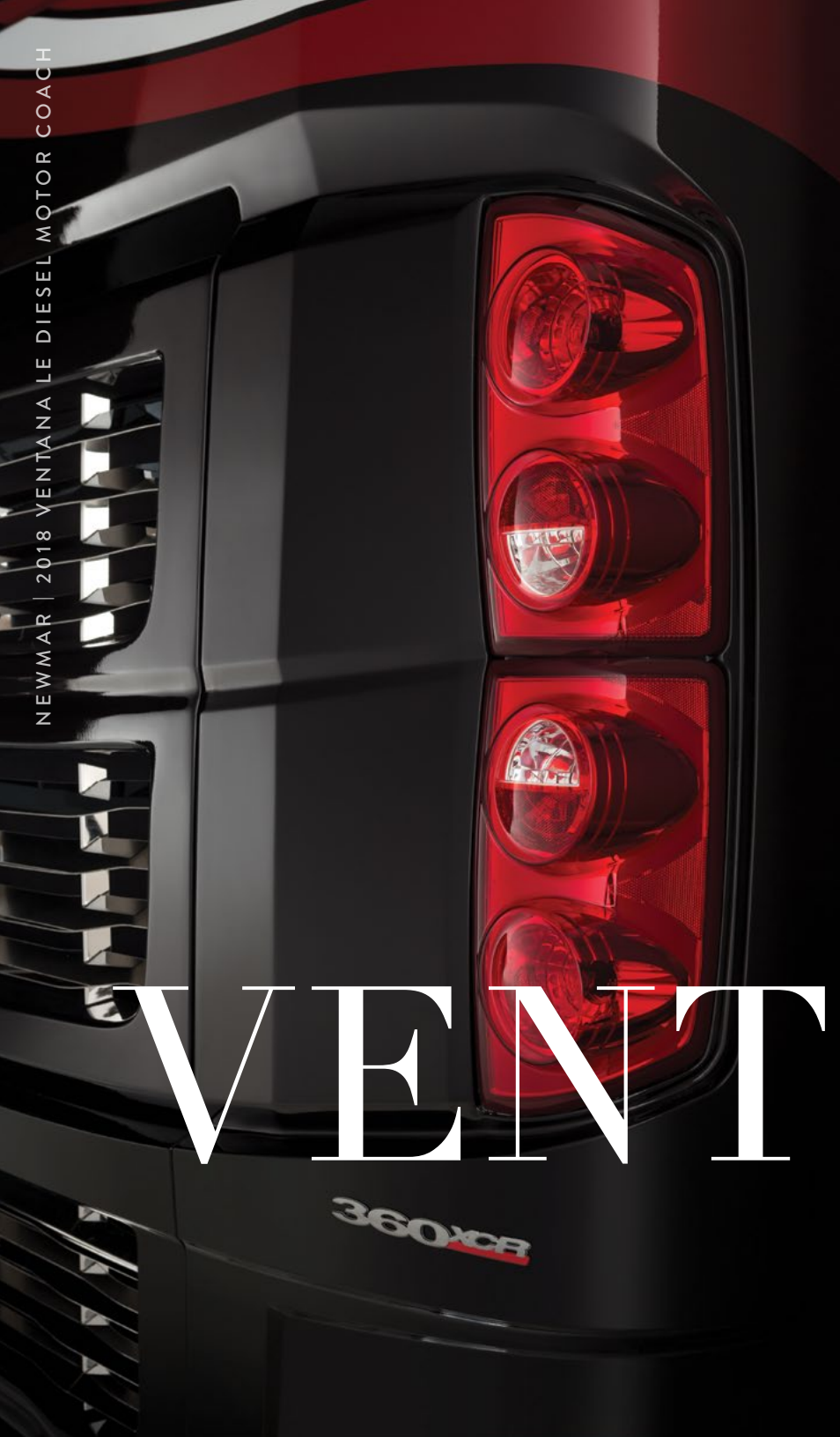


NEWMAR | 2018 VENTANA LE DIESEL MOTOR COACH



VENTANA

50 YEARS HAVE TAUGHT US...

A JOB WELL DONE IS A JOB DONE BETTER.



LEADING THE WAY FORWARD

At Newmar, our first 50 years have taught us that the brightest futures are realized by those willing to blaze a new trail. Lead rather than follow. And reject cookie-cutter imitation in favor of cutting-edge innovation. That's why we are committed to spending the next half century creating handcrafted motor coaches that go above and beyond their batch-built competition. Coaches designed and engineered to help you live the RV lifestyle to the absolute fullest. Join us, and discover the Newmar difference for yourself.

A stylized, handwritten signature in dark ink, appearing to read "Matt Miller".

Matt Miller, President





Full-paint Masterpiece™ Finish | Armory Exterior | Floor Plan 4048

YOUR SEARCH ENDS HERE

The feature-packed Ventana LE is everything you want in a modern-day motorhome and so much more. Built atop a Freightliner® XCR chassis with V-Ride® rear suspension, Ventana LE provides a quieter, more stable ride with help from our patented STAR Foundation, along with effortless steering thanks to Comfort Drive.™

Arrive in style

Armory full-paint Masterpiece™ finish

Enjoy the shade

Power side and entrance door awnings

SIT BACK. RELAX.
REPEAT.

Ventana LE is a mecca for soft and comfortable amenities. Flexsteel® Ultralux leather furniture can be found throughout, including six-way power-adjustable driver and passenger seats and an available recliner. You can even opt for a retractable Vizio® LED TV or a sofa that converts into a pair of bunk beds.

Picture yourself

Floor plan 4048 with Armory décor

Out of sight

Exclusive vent-free Feature Ceiling



Armory Décor with Sienna Glazed Maple Cabinetry | Floor Plan 4048



AT HOME IN THE 21ST CENTURY

With advanced, easy-to-use Wi-Fi solutions now available, the 2018 Ventana LE helps you stay connected. Choose the available Blu-ray player and Bose® Solo 5 Bluetooth®-compatible soundbar and you and yours will have instant access to a world-class entertainment experience too.

Smart looks

Available water-resistant luxury plank vinyl flooring

Taste and space

Available Hide-a-Leaf buffet dinette



BRING YOUR COOKBOOK

New for 2018, floor plan 4048 gives you a vast L-shaped kitchen space with dual hardwood pantries. A metal-pattern backsplash sets a contemporary tone, while standard fixtures and appliances include a 30" Whirlpool® microwave, a recessed range with oven and a stainless steel under-mounted sink.

Made in-house

Sienna glazed maple cabinetry

Solid style

Polished solid-surface countertops





OUTFITTED YOUR WAY

The master suite can be had with both a mirrored full-wall wardrobe and a mammoth king bed. Tuck yourself in underneath the quilted bedspread, which comes adorned with a scarf, accent pillow and square-pattern headboard, or rise and get ready with help from a roomy twin-sink vanity.

Refresh & renew
Available twin-sink vanity with separated storage

Sleep soundly
Available king bed with two-tone headboard





EXTRAS ARE EVERYWHERE

Available with a Whirlpool® stacked washer and dryer, Ventana LE delivers you with the residential amenities you demand. Enjoy a late-night talk show on your LED TV with standard DVD or optional Blu-ray player. Or, just steps away, find a luxurious glass-door shower.

Easy living

Available two-piece stacked washer and dryer

Refresh and renew

Available 40"x 32" glass-door shower





BUILT FOR ANY OCCASION

The 2018 Ventana LE is your ultimate travel companion, whether you're on the road or looking to have some fun. In addition to a custom-tuned JBL® cockpit audio system, Ventana LE now offers a six-inch infotainment monitor with Rand McNally® navigation and an exterior entertainment center that includes both an LED TV and a Bluetooth®-compatible soundbar.

More visibility

Standard rearview monitoring and side-view cameras

See clearly

Remote-control convex mirrors with defrost

EXTERIOR & INTERIOR DÉCOR



ARMORY EXTERIOR

Awning Color: Charcoal Tweed



ARMORY INTERIOR

a. Furniture/ Fabric b. Flooring c. Carpet d. Counter Top

OPTIONAL LAMINATE PLANK FLOORING



ASTORIA MAPLE FLOORING



SIENNA MAPLE FLOORING



CALYPSO MAPLE FLOORING

WOOD OPTIONS



ASTORIA GLAZED MAPLE



SIENNA GLAZED MAPLE



CALYPSO GLAZED MAPLE



SEASPRAY EXTERIOR

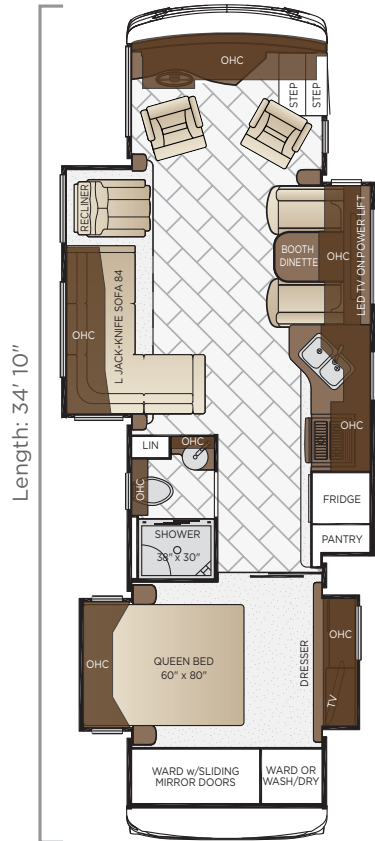
Awning Color: Linen Tweed



SEASPRAY INTERIOR

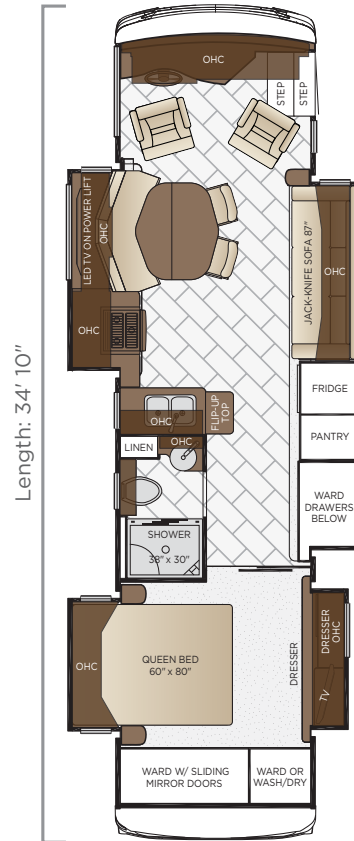
a. Furniture/ Fabric b. Flooring c. Carpet d. Counter Top

VENTANA LE



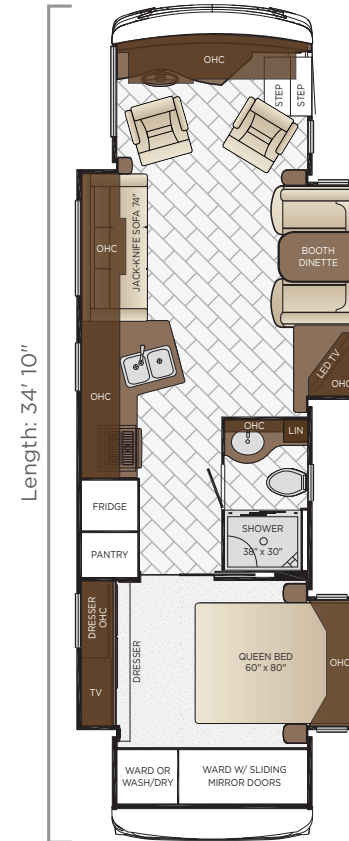
3412

| | |
|---------------------|------------|
| Length | 34'10" |
| Width | 101.5" |
| App. Overall Height | 12'10" |
| Interior Width | 95.5" |
| Interior Height | 84" |
| Grey Tank | 65 gal. |
| Sewage Tank | 45 gal. |
| Water Tank | 105 gal. |
| Propane Tank | 32 gal. |
| Furnace | 35,000 btu |



3413

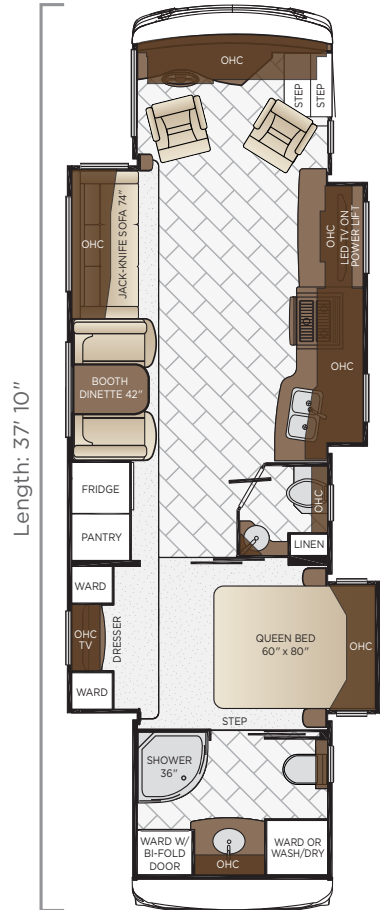
| | |
|---------------------|------------|
| Length | 34'10" |
| Width | 101.5" |
| App. Overall Height | 12'10" |
| Interior Width | 95.5" |
| Interior Height | 84" |
| Grey Tank | 65 gal. |
| Sewage Tank | 45 gal. |
| Water Tank | 105 gal. |
| Propane Tank | 32 gal. |
| Furnace | 35,000 btu |



3436

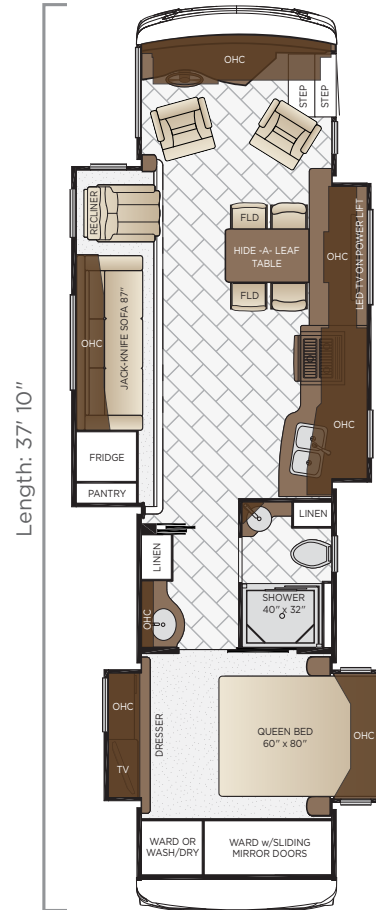
| | |
|---------------------|------------|
| Length | 34'10" |
| Width | 101.5" |
| App. Overall Height | 12'10" |
| Interior Width | 95.5" |
| Interior Height | 84" |
| Grey Tank | 65 gal. |
| Sewage Tank | 45 gal. |
| Water Tank | 105 gal. |
| Propane Tank | 32 gal. |
| Furnace | 35,000 btu |

FLOOR PLANS



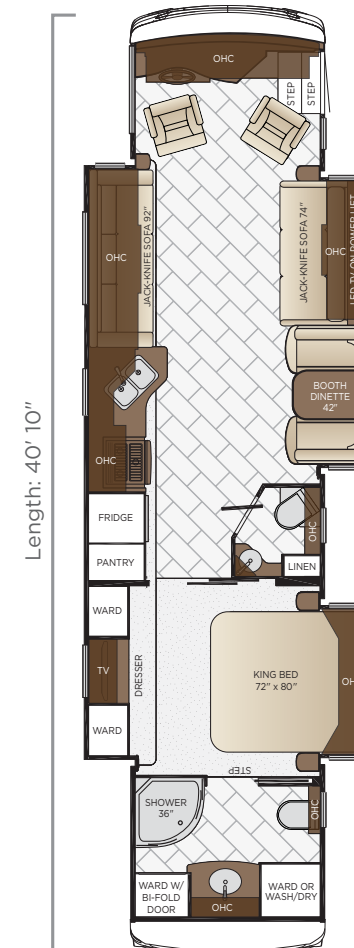
3709

| | |
|---------------------|------------|
| Length | 37'10" |
| Width | 101.5" |
| App. Overall Height | 12'10" |
| Interior Width | 95.5" |
| Interior Height | 84" |
| Grey Tank | 65 gal. |
| Sewage Tank | 45 gal. |
| Water Tank | 105 gal. |
| Propane Tank | 32 gal. |
| Furnace | 54,000 btu |



3713

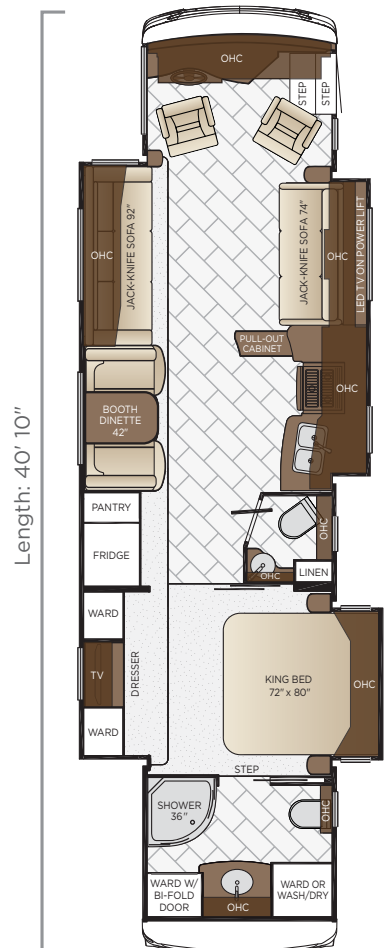
| | |
|---------------------|------------|
| Length | 37'10" |
| Width | 101.5" |
| App. Overall Height | 12'10" |
| Interior Width | 95.5" |
| Interior Height | 84" |
| Grey Tank | 65 gal. |
| Sewage Tank | 45 gal. |
| Water Tank | 105 gal. |
| Propane Tank | 32 gal. |
| Furnace | 54,000 btu |



4002

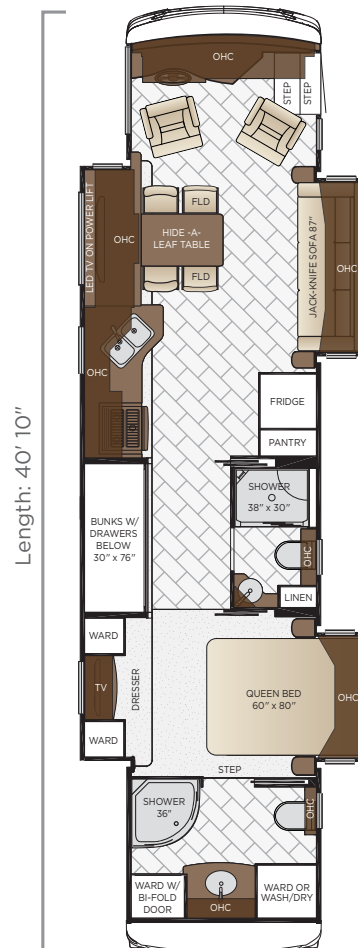
| | |
|---------------------|------------|
| Length | 40'10" |
| Width | 101.5" |
| App. Overall Height | 12'10" |
| Interior Width | 95.5" |
| Interior Height | 84" |
| Grey Tank | 65 gal. |
| Sewage Tank | 45 gal. |
| Water Tank | 105 gal. |
| Propane Tank | 32 gal. |
| Furnace | 54,000 btu |

FLOOR PLANS



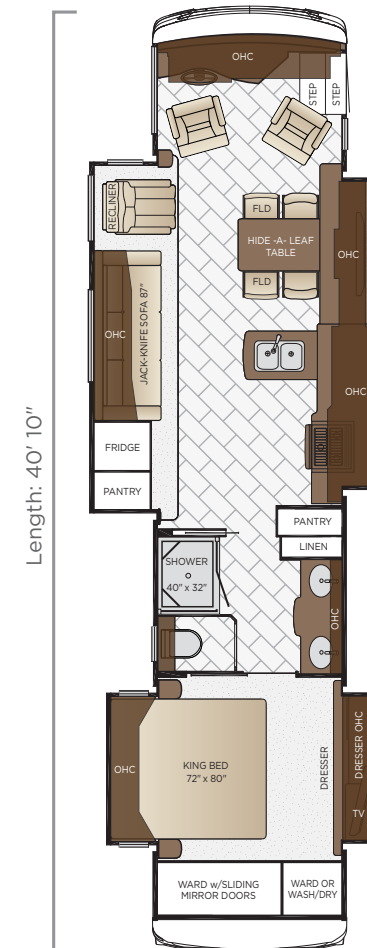
4037

| | |
|---------------------|------------|
| Length | 40'10" |
| Width | 101.5" |
| App. Overall Height | 12'10" |
| Interior Width | 95.5" |
| Interior Height | 84" |
| Grey Tank | 65 gal. |
| Sewage Tank | 45 gal. |
| Water Tank | 105 gal. |
| Propane Tank | 32 gal. |
| Furnace | 54,000 btu |



4042

| | |
|---------------------|------------|
| Length | 40'10" |
| Width | 101.5" |
| App. Overall Height | 12'10" |
| Interior Width | 95.5" |
| Interior Height | 84" |
| Grey Tank | 65 gal. |
| Sewage Tank | 45 gal. |
| Water Tank | 105 gal. |
| Propane Tank | 32 gal. |
| Furnace | 54,000 btu |



4048

| | |
|---------------------|------------|
| Length | 40'10" |
| Width | 101.5" |
| App. Overall Height | 12'10" |
| Interior Width | 95.5" |
| Interior Height | 84" |
| Grey Tank | 65 gal. |
| Sewage Tank | 45 gal. |
| Water Tank | 105 gal. |
| Propane Tank | 32 gal. |
| Furnace | 54,000 btu |



QUALITY YOU CAN FEEL

Like a fine home, the 2018 Ventana LE is framed 16 inches on center and comes covered by a BriteTEK™ roof with walkable decking and an integrated gutter rail.

| FLOOR PLAN | ENGINE HP | AXLE RATIO | FUEL CAP. | WHEEL BASE | FRONT GAWR | REAR GAWR | TAG GAWR | GVWR | GCWR | APP. UVW | APP. NCC |
|------------|-----------|------------|-----------|------------|------------|-----------|----------|-----------|-----------|-----------|----------|
| 3412 | 340 | 4.78 | 100 gal. | 206 | 12400 lb. | 20000 lb. | n/a | 31400 lb. | 33000 lb. | 25700 lb. | 5700 lb. |
| 3413 | 340 | 4.78 | 100 gal. | 206 | 12400 lb. | 20000 lb. | n/a | 31400 lb. | 33000 lb. | 25700 lb. | 5700 lb. |
| 3436 | 340 | 4.78 | 100 gal. | 206 | 12400 lb. | 20000 lb. | n/a | 31400 lb. | 33000 lb. | 25600 lb. | 5800 lb. |
| 3709 | 340 | 4.78 | 100 gal. | 242 | 13300 lb. | 20000 lb. | n/a | 31400 lb. | 33000 lb. | 27500 lb. | 3900 lb. |
| 3713 | 340 | 4.78 | 100 gal. | 242 | 13300 lb. | 20000 lb. | n/a | 31400 lb. | 33000 lb. | 27500 lb. | 3900 lb. |
| 4002 | 360 | 4.78 | 100 gal. | 276 | 13500 lb. | 24000 lb. | n/a | 37500 lb. | 47500 lb. | 29200 lb. | 8300 lb. |
| 4037 | 360 | 4.78 | 100 gal. | 276 | 13500 lb. | 24000 lb. | n/a | 37500 lb. | 47500 lb. | 29500 lb. | 8000 lb. |
| 4042 | 360 | 4.78 | 100 gal. | 276 | 13500 lb. | 24000 lb. | n/a | 37500 lb. | 47500 lb. | 29100 lb. | 8400 lb. |
| 4048 | 360 | 4.78 | 100 gal. | 276 | 13500 lb. | 24000 lb. | n/a | 37500 lb. | 47500 lb. | 29000 lb. | 8500 lb. |

The content in our literature depicts and describes products that are subject to change. For the most recent images and information, please visit NewmarCorp.com.

Lengths, heights, widths and dry weights are approximate. Weight will vary based on optional equipment added to the above base weight.

GAWR: Gross Axle Weight Rating is the maximum permissible weight for an axle.

GVWR: Gross Vehicle Weight Rating is the maximum permissible weight for a fully loaded motor coach.

GCWR: Gross Combination Weight Rating is the value specified by the manufacturer of the vehicle as the maximum allowable loaded weight of this motor coach and any towed trailer or towed vehicle.

UVW: Unloaded Vehicle Weight is the weight of this motor coach as built at the factory with full fuel, engine oil and coolants. Does not include cargo, fresh water, propane gas or dealer-installed accessories.

NCC: Net Carrying Capacity is the maximum weight of all occupants, including the driver, personal belongings, food, fresh water, waste water, propane gas, tools, tongue weight of towed vehicle, dealer-installed accessories, etc., that can be carried by the motor coach.

Specifications supplied by the chassis manufacturer.

Ventana LE R-Values:

Roof R-Value = 19

Sidewall R-Value = 11

Floor R-Value = 16

Basement R-Value = 4

FEATURES & OPTIONS



EXTERIOR

EXTERIOR FEATURES

- Full-Paint Masterpiece Finish™ with Diamond Shield Protection on Front Cap
- Convex Exterior Mirrors with Remote Control and Defrost
- Entrance Door with Automatic Step
- Assist Handle at Entrance Door
- Hydraulic Leveling Jacks
- Stainless Steel Exterior Trim Pieces on Front Cap and Grille Area
- Mud Flaps
- Rear Ladder
- Rear Hitch for Towing Car
- Undercoating
- Hammock Backer

OPTIONS

- Patio Hammock Package
- Flag Pole Bracket
- Temporary Windshield Protection for Transport

CONSTRUCTION FEATURES

- BriteTEK™ Roof with Walkable Deck
- Gelcoated Fiberglass Exterior Sidewalls, Front and Rear Caps
- Aluminum-Frame Sidewalls & Roof Construction, 16" on Center
- 5/8" Foam Insulation Laminated in Sidewalls & Ceiling

OPTIONS

- One Piece Molded Fiberglass Roof
- Polar Pak R19 Batten Insulation in Roof

WINDOWS, AWNINGS & VENTS

| |
|---|
| One Piece Tinted Windshield |
| Frameless Single-Pane Tinted Safety-Glass Windows |
| Power Vent in Kitchen and Bathroom |
| Skylight Above Shower |
| Carefree Traveler Power Side and Entrance Door Awning with Alumaguard |
| Slideout Awning Covers |
| Kitchen Window |
| OPTIONS |
| Bunk Windows |
| Frameless Double Pane Tinted Safety-Glass Windows |
| Fantastic Vent with Rain Sensor in Kitchen & Bathroom |

CHASSIS FEATURES

| |
|--|
| Freightliner® XCR Chassis with 340Hp Cummins ISB Engine 34-37' Floor Plans |
| Freightliner® XCR Chassis with 360Hp Cummins ISB Engine 40' Floor Plans |
| Chrome Wheel Simulators |
| Comfort Drive Steering System with Power Column and Adjustable Control |
| V-Ride Drive Axle Suspension |
| Cruise Control |
| Manual Tilt and Telescope Steering Wheel with VIP Smart Wheel and Suspended Pedals |
| Recessed Fuel Fills with Crossover to Fill from Either Side |
| Anti-Lock Braking System |
| Chassis Battery Disconnect |

AIR CONDITIONING & HEATING

| |
|---|
| Two 13.5M Penguin Central Air Conditioners |
| Propane Furnace with Ducted Heat |
| Dash Heater and Air Conditioner |
| Wall Mounted Sensors for Heating and Air Conditioning |
| Driver/Passenger Overhead Dash Fans |
| OPTIONS |
| Two 15M Penguin Heat Pump Air Conditioners |

ELECTRICAL FEATURES

| |
|--|
| 6.0 kW Cummins Onan® Diesel Quiet Series Generator |
| 50 Amp Electrical Service with Flexible Cord and Automatic Transfer Switch |
| Four 12-Volt House Batteries on Pullout Tray |
| Battery Disconnect Switch for House Battery |
| 1200 Watt Inverter |
| Emergency Engine Start Switch |
| Exterior Security Light on Doorside |
| Midship Side Turn Signals |
| LED Lights Recessed in Ceiling and Underneath Overhead Cabinets |
| Manually Operated Hold-To-Run Slideout Switch |
| 12 Volt Auxiliary Receptacle on Dashboard |
| USB Charger At Dinette & Bedroom Night Stand |
| Dual USB Outlet at Dash for Driver Use |
| USB Outlet at Head of Each Bunk Area* |
| Engine Block Heater |
| Cable TV Connection |
| Lights in Exterior Storage Compartments |
| Interior Courtesy Lights |
| Spare Fuses in Chassis Fuse Panel & House Fuse Panel |
| OPTIONS |
| 8.0 Kw Onan® Diesel Quiet Series Generator |
| 2000 Watt Modified Sine Inverter with Four 6-Volt Batteries |
| Automatic Generator Start on Low Battery or Temperature Setting |
| Energy Management System |

PLUMBING & BATH FEATURES

| |
|--|
| Demand Water System |
| Sewage Holding-Tank Rinse |
| Water Heater Bypass System |
| Dometic 321 China Bowl Stool or Macerator Stool* |
| Systems Monitor Panel |
| Fiberglass Shower with Glass Door |
| Exterior Shower |
| Water Filter for Entire Unit |



INTERIOR FEATURES

| |
|---|
| Dash Panel Color Coordinated ABS |
| Interior Assist Handle at Main Entry Door |
| Power Stepwell Cover |
| Inlaid Six Panel Design Interior Passage Doors |
| Decorative Wall Art |
| Padded Vinyl Ceiling |
| Vinyl Tile Floor in Kitchen, Bathroom and Living Area |
| Carpeting in Bedroom and on Slideout Floors |
| MCD Window Shades |
| MCD Power Shades at Windshield and Manual Shades on Driver/Passenger Side Windows |
| Quilted Bedspread with Bed Scarf and Accent Pillow |
| 10 Bc Fire Extinguisher, Smoke Detector, Propane and Carbon Monoxide Detector |

| |
|---|
| OPTIONS |
| Living Room Floor Extended in Bedroom Area |
| Luxury Vinyl Plank Floor in Place of Vinyl Tile |

CABINETS & FURNITURE

| |
|--|
| Calypso Maple Mitered Designer Glazed Cabinet Doors |
| Concealed Hinges on Cabinet Doors |
| Drawers with Full Extension Guides |
| Fixed Pantry Shelves |
| Polished Solid Surface Countertop in Kitchen with Stainless Steel Sink and Sink Covers |
| Solid Surface Countertops in Bathroom and Bedroom |
| Flexsteel® Ultralux Leather Sofa and Driver/Passenger Seats |
| Smooth-Top Mattress |
| Lifts on Bed Top |
| Front Seats with 6 Way Power |
| Manual Foot Rest on Passenger Seat |
| Passenger Seat Work Station |
| Diamond Dinette* |
| Extended Rotation Concealed Hinge for Washer/Dryer Cabinet Door |

| |
|---|
| OPTIONS |
| Sienna Maple Mitered Designer Glazed Cabinet Doors |
| Astoria Maple Mitered Designer Glazed Cabinet Doors |

| |
|--|
| Flexsteel Euro Booth Dinette with 1-6" Table Leaf |
| Hide-A-Bed with Air Mattress |
| Off Door Side Hide-A-Bed with Air Mattress in Place of L-Sofa |
| Off Door Side Power Extenda L Sofa with Air Mattress |
| Sleep Number Deluxe® Square Corner Air Mattress |
| Sleep Number Premier® Radius Corner Air Mattress |
| Door Side Fold & Tumble Sofa with Air Mattress |
| Power Flip Up Sofa in Bed Base with Sleep Number® Air Mattress |
| Power Incline Retracting Bed Base, Sleep Number® Air Mattress |
| Power Incline Head of Bed with Sleep Number® Air Mattress |
| 87" Bunk Sofa* |
| Off Door Side Two Swivel Wall Hugger Recliners with Lamp Stand |
| Plush Pillow Top Mattress |
| Side Opening Hide-A-Bed Sofa with Air Mattress |

APPLIANCES & ACCESSORIES

| |
|--|
| 30" Over the Range Microwave |
| Recessed Three-Burner Range with Oven |
| Norcold® 10 Cu. Ft. Refrigerator with Black Panel Front |
| 10 gal. Gas/Electric Water Heater with Direct-Spark Ignition |
| Prep for Two-Piece Washer/Dryer |
| Flush Gas Cooktop Cover of Matching Countertop Material |

| |
|---|
| OPTIONS |
| Norcold® 12 Cf. Four-Door Refrigerator with Icemaker |
| Icemaker Added to Standard Norcold® Refrigerator |
| Frigidaire 10 Cf. Refrigerator, 2000 Watt Inverter with Six 6-Volt Batteries and 22 gal. Propane Tank |
| Whirlpool 19.7 Refrigerator, 2000 Watt Pure Sine Inverter & Six 6-Volt Batteries and 22 gal. Propane Tank |
| 30" Convection Microwave Oven with Three Burner Cooktop |
| Whirlpool® Two Piece Stacked Washer & Dryer |
| Air Horns |
| Fireplace in Living Area* |



AUDIO, VIDEO & ACCESSORIES

| |
|--|
| LED TV and DVD Player in Living and Bedroom Areas, TV Sizes Vary per Floor Plan* |
| Dash Radio/CD Player with Harman/JBL 180 Watt Sound System and Subwoofer |
| Bluetooth Microphone for Sony® Dash Radio |
| Rearview Color Monitor System with Audio |
| Side View Cameras Displayed onto Rearview Monitor Screen |
| Winegard Digital Crank Up TV Antenna |
| Satellite Prep on Roof |
| TV Jack and 110 Volt Recept in Door Side Exterior Storage Compartment |
| High Definition Component Wiring |

| |
|---|
| OPTIONS |
| 32" LED TV in Front Overhead |
| Bose Solo 5 Soundbar Sound System |
| Two-11" LCD Flip Down LCD Monitor/DVD Player with Headphone* |
| Two Blu-ray Disc Players |
| Exterior Entertainment Center in Sidewall with Vizio 43" LED TV & Soundbar |
| Exterior Entertainment Center in Storage Compartment with Vizio 32" LED TV & Soundbar |
| Sirius® Satellite Radio with Antenna (Does not include monthly subscription) |
| WiFiRanger Skypro Pack Router |
| Winegard Automatic Dome Satellite Dish |
| Winegard Automatic Open Face Satellite Dish |
| Winegard Automatic Open Face SWM Satellite Dish |
| Winegard Cellular In Motion Wi-Fi |
| Winegard In Motion Dome Satellite Dish |
| Xite Dash Radio, 6" Monitor with Rand McNally Navigation |

*Check with dealership on floor plan availability.

The content in our literature depicts and describes products that are subject to change. For the most recent images and information, please visit NewmarCorp.com.

THE NEWMAR CUSTOMER EXPERIENCE

The Newmar Difference goes beyond our industry-leading motor coaches to deliver you with an unrivaled ownership experience.



QUALITY FROM THE START

Every Newmar is crafted one at a time by folks who have spent an average of eight years building them. And each coach we assemble must undergo more than 1,000 quality checks before ever leaving the Newmar factory.



EVERYTHING IN ONE PLACE

As a Newmar owner, you'll find resources specific to your coach through **Newgle**, an easy-to-use knowledge base that houses everything from user guides to technical support documents.



FRIENDS FOR LIFE

Join Newmar and meet fellow owners through the **Newmar Kountry Klub**, a top social club for RV travelers. Or, connect using the world's only social sharing network created for RVers, by RVers — **RoadLens.io**.



SEAMLESS SERVICE

Available 24/7, our service specialists guarantee dealer repair authorization within four hours, and all in-stock parts ship the same day, free of charge. If a part is out of stock, we'll pull it from our production floor or order the part from the appropriate vendor right away.



ROCK-SOLID WARRANTY COVERAGE

All models include a 1-year/unlimited mileage limited warranty and a 5-year, non-transferable structural warranty that covers your vehicle's superstructure in the event it fails to perform. Ask your Newmar dealer for details.



A. ROOF

BriteTEK™ Roof with
Walkable Deck

Batten Insulation

A/C Ducting

16" on Center Aluminum
Rafter Framing

Kraft Paper Vapor Barrier

5/8" Bead Foam

3/16" Panel

Padded Vinyl Overlay

B. SIDEWALL

Interior Wall Panel

5/8" Bead Foam

Kraft Paper Vapor Barrier

Batten Insulation

Composite One-Piece
Gelcoat Exterior Wall

Aluminum Framing

C. FLOOR

Carpet/Tile

Carpet Padding

5/8" Floor Decking

Batten Insulation

16" on Center Wood Framing

Polyethylene Moisture Barrier

D. EXTERIOR

13.5M Penguin™ Central Air
Conditioner

One-Piece Bonded Windshield

Frameless, Single-Pane, Tinted
Safety-Glass Windows

Side-Hinged Baggage Doors

OUR PARTNERS

Newmar Quality Begins With The Company We Keep

Newmar only works with suppliers dedicated to providing our customers with unrivaled quality, comfort and convenience. Best-in-class performance from names you can trust. At Newmar, that's our difference, and our promise.

BASF

The Coatings division of BASF is a global expert in the development and production of innovative and sustainable OEM and refinish coatings. Coatings by BASF – solutions beyond your imagination.

Flexsteel

Flexsteel Recreation offers innovative furniture designed for a life that rarely sits still. Comfortable and space-saving, Flexsteel furniture ensures your RV is always ready for dining, sleeping or hosting guests.

Freightliner Custom Chassis

Freightliner Custom Chassis are renowned for their exceptional ride, excellent maneuverability, advanced chassis technology, and nationwide 24/7 factory-direct support.

Industrial Finishes

Industrial Finishes has supported RV manufacturers for over four decades. The Industrial Finishes paint process delivers uncompromising quality, providing your coach with a true Masterpiece™ finish.

Sony

Beautifully designed Sony TVs & Blu-ray players deliver an immersive picture and true-to-life sound. Revolutionize every aspect of your home entertainment experience with Sony.

Spartan Motors

An American company with over 30 years of experience designing and manufacturing the premier motorhome chassis, which deliver superior performance, exceptional safety ratings, and industry-leading technology.





THE NEWMAR LEGACY

50 years, built one by one.

Driven to engineer and build the highest-quality RVs the world had ever seen, Marvin Miller and Marvin Newcomer founded Newmar Corporation in 1968.

The pair set up shop in the small Midwest woodworking town of Nappanee, Indiana, where they discovered the people who would establish Newmar as a leading RV manufacturer over the next half century. Artisans and engineers, product designers and quality-control experts to whom being the best is more important than being the biggest.

As we move toward 100 years as a company, our products will continue to evolve. But one thing that will never change is our commitment to hand-crafting excellence, one coach at a time.



MANA
LE



NEWMAR CORPORATION | 355 N DELAWARE ST | PO BOX 30 | NAPPANEE, IN 46550-0030 | 574-773-7791 | FAX 574-773-2895
www.newmarcorp.com